

Nodus Factory™



Textile fittings & connectors

Nodusfactory-Sail®

2024



www.nodusfactory.com

Créateur d'accastillage & solutions textiles



Innovate to rig, Noder!

Nodus Factory "Short circuit and proximity"!

Our Nodusfactory-Sail catalogue has been designed interactively to help you make the right choices.

Link : <https://www.nauticexpo.fr/prod/nodus-factory-66050.html>

You can scan the Qr code on each product sheet to place your order via our online shop.

Our technical advice call centre is also at your disposal.

Link : +33 (0) 2 97 67 64 83

In Europe, you are supported by our partners who benefit from all the expertise, sales support and personalized advice of the Nodus Factory Sail team.

Link: <https://www.nauticexpo.fr/prod/nodus-factory-66050.html>

With our export partners, we have set up local supply points to quickly satisfy your needs and desires.

Link: <https://www.nauticexpo.fr/prod/nodus-factory-66050.html>

Meeting your expectations in terms of high-performance textile fittings to equip you easily and more safely remains a constant in the research and development of our products.

Designed and manufactured in France, our products are tested and certified by Bureau Veritas, guaranteeing the conformity of our products.

Thank you for your trust.

Good navigation.

FAQ – A question ?



Nodus Factory™

Parc d'Activités de Laroiseau
5, rue Ella Maillart
F – 56000 Vannes

Tél : +33 (0) 2 97 67 64 83

Email : sail@nodusfactory.com

Textile Shackles®



Dyneema® shackles

Used for almost all manoeuvres, textile shackles are an essential equipment on board sailing boats.

Each shackle model has a specific use and comes in a range of sizes to suit your needs.

Your choice should be based on its use

Dyneema® Nodusfactory™ textile shackles have many advantages:

- lightweight
- mechanical strength
- UV resistance
- excellent abrasion resistance



Which rope for which use?

To ensure the best performance, durability and reliability from your lines, it's important to choose the right fabric!

Whether it's for your sheets, halyards or mooring lines, Nodus Factory™ has put together a comparative table of the different fibers.

| Material | Resistance | Lengthening | Longevity | Use |
|----------------------------------|------------|-------------|-----------|--------------------------------|
| Polyester | 3 | 3 | 3 | Polyvalent |
| Polyamide | 2 | 1 | 2 | Mooring lines |
| Polypropylène | 2 | 1 | 1 | Towing |
| High-modulus polyethylene | 5 | 4 | 4 | Running rigging and sheathing |
| Aramid | 4 | 4 | 2 | Standing rigging and sheathing |
| PBO | 3 | 5 | 1 | Standing rigging |

Polyester's main quality is its longevity and UV resistance, but its weakness is its elongation (elasticity), which can vary between 8 and 12%, depending on the quality of the fiber. Our Nodus Factory™ halyards and sheets use 'high tenacity' polyesters, which have a lower elongation than standard quality polyester.

Polyamide has a higher elongation (15-20%), but its high elasticity makes it ideal for mooring, as the fibers protect the cleats from shocks by absorbing jolts. However, a conventional polyamide mooring line is heavy to handle and is not water-repellent, as it absorbs water. Dockline® Nodus Factory mooring lines are made from HT polyester for greater durability.

High modulus **polyethylene** or Dyneema® or Spectra®, have a similar elongation at break and a breaking strength greater than that of aramid fibers, or eight times that of stainless steel. The advantage of Dyneema® is that it is UV and abrasion resistant, making it ideal for sheaths. Its weakness is that under static load, when subjected to high and prolonged tension, the fiber elongates irreversibly (creep). However, the latest technological developments have made it possible to develop a particularly stable Dyneema®.

Aramids, marketed under the Name Kevlar® or Technora®, have high impact resistance and excellent breaking strength. The advantages of aramids fibers are low elongation at break (around 3.5%) and remarkable stability under static load (no creep), so the fiber is very strong (five times stronger than stainless steel), with very low elasticity. It is also highly resistant to friction (heat) at 450°C. However, aramids are not very UV-resistant.

PBO, a high-performance but fragile fiber, has a very limited lifespan because it cannot withstand UV rays or scratching, but its advantages are its exceptional breaking strength, very low elongation (elasticity) and excellent mechanical and thermal stability.

Application range - Connector on Dyneema® rope

| T-close | Strope | | | | | |
|----------|----------|-------------|-------------|-------------|-------------|-------------|
| Sail m2 | Rope | 6 mm | 8 mm | 10 mm | 12 mm | 14 mm |
| Upwind | | E T-close 3 | E T-close 5 | E T-close 6 | E T-close 8 | E T-close 8 |
| | ∅ Strope | 3 mm | 4 mm | 5 mm | 6 mm | 7 mm |
| Wind Bft | Wind kts | m2 | m2 | m2 | m2 | m2 |
| 8 Bft | 40 | 26 | 55 | 78 | 113 | 113 |
| Downwind | | E T-close 3 | E T-close 5 | E T-close 6 | E T-close 8 | E T-close 8 |
| | ∅ Strope | 3 mm | 4 mm | 5 mm | 6 mm | 7 mm |
| Wind Bft | Wind kts | m2 | m2 | m2 | m2 | m2 |
| 8 Bft | 40 | 41 | 86 | 122 | 175 | 175 |

| T-bone | Strope | | | | | |
|----------|----------|------|------|-------|-------|-------|
| Sail m2 | Rope | 6 mm | 8 mm | 10 mm | 12 mm | 14 mm |
| Upwind | | E M6 | E M8 | E M10 | E M12 | E M14 |
| | ∅ Strope | 3 mm | 4 mm | 5 mm | 6 mm | 7 mm |
| Wind Bft | Wind kts | m2 | m2 | m2 | m2 | m2 |
| 8 Bft | 40 | 43 | 59 | 89 | 125 | 188 |
| Downwind | | E M6 | E M8 | E M10 | E M12 | E M14 |
| | ∅ Strope | 3 mm | 4 mm | 5 mm | 6 mm | 7 mm |
| Wind Bft | Wind kts | m2 | m2 | m2 | m2 | m2 |
| 8 Bft | 40 | 66 | 92 | 139 | 195 | 293 |

| Spliced eye | Eye strope | | | | | |
|-------------|------------|---------|---------|---------|---------|---------|
| Sail m2 | Rope | 6 mm | 8 mm | 10 mm | 12 mm | 14 mm |
| Upwind | | E eye 3 | E eye 4 | E eye 5 | E eye 6 | E eye 7 |
| | ∅ Strope | 3 mm | 4 mm | 5 mm | 6 mm | 7 mm |
| Wind Bft | Wind kts | m2 | m2 | m2 | m2 | m2 |
| 8 Bft | 40 | 54 | 99 | 154 | 214 | 324 |
| Downwind | | E eye 3 | E eye 4 | E eye 5 | E eye 6 | E eye 7 |
| | ∅ Strope | 3 mm | 4 mm | 5 mm | 6 mm | 7 mm |
| Wind Bft | Wind kts | m2 | m2 | m2 | m2 | m2 |
| 8 Bft | 40 | 85 | 154 | 239 | 333 | 504 |

| T-sail | Strope | | | |
|----------|----------|------------|------------|------------|
| Sail m2 | Rope | 4 mm | 5 mm | 6 mm |
| Upwind | | E T-sail 5 | E T-sail 6 | E T-sail 7 |
| Wind Bft | Wind kts | m2 | m2 | m2 |
| 8 Bft | 40 | 27 | 47 | 74 |
| Downwind | | E T-sail 5 | E T-sail 6 | E T-sail 7 |
| Wind Bft | Wind kts | m2 | m2 | m2 |
| 8 Bft | 40 | 43 | 73 | 115 |

| T-drop | Strope | | | | |
|----------|----------|----------|----------|----------|----------|
| Sail m2 | Rope | 8 mm | 10 mm | 12 mm | 14 mm |
| Upwind | | E T-d 12 | E T-d 12 | E T-d 16 | E T-d 16 |
| Wind Bft | Wind kts | m2 | m2 | m2 | Wind Bft |
| 8 Bft | 40 | 21 | 33 | 30 | 30 |
| Downwind | | E T-d 12 | E T-d 12 | E T-d 16 | E T-d 16 |
| Wind Bft | Wind kts | m2 | m2 | m2 | Wind Bft |
| 8 Bft | 40 | 33 | 33 | 47 | 47 |

T-close K[®] - Adjustable textile shackle

« Universal adjustable textile connector »



| Product Name | Breaking Load | Weight | Length <i>Adjustable Loop</i> | Sheave Pulley Ø | Sail area |
|-----------------|---------------|---------|----------------------------------|-----------------|-----------|
| | Direct | | Mini/maxi | | 40 kts |
| | kg | gr | cm | mm | m2 |
| K / Ks 2 | 380 | 2 / 4 | 1/7 | 15/30 | 10 |
| K / Ks 3 | 750 | 4 / 8 | 2/9 | 30/40 | 21 |
| K / Ks 5 | 1900 | 14 / 16 | 3/10 | 40/50 | 52 |
| K / Ks 6 | 2600 | 26 / 28 | 4/12 | 50/60 | 71 |
| K / Ks 8 | 4800 | 56 / 60 | 5/17 | 60/70 | 132 |

TECHNICAL SHEET

- ❑ T-close[®] connector – Glass-filled Pa Tech
- ❑ 100% Dyneema[®] rope
- ✓ SK78 12 plaits
- ✓ pre-stretched, coated – Light grey / black
- ❑ Dyneema[®] sheath for the Ks "Technical Range" model
- ✓ 48 plaits coated Black
- ❑ Accessories
- ✓ Block[®] ring – flexible thermoplastic TPE

USE

- ❑ Universal adjustable Dyneema[®] textile connector, for pulleys, booms, sheets, halyards, sails, lazy-bag, etc.

How to change the length of the loop :

- Slide the T-close[®] connector, then close the loop with the Grip[®] Knot.



Information sail@nodusfactory.com

NODUS
FACTORY

MADE IN FRANCE

www.nodusfactory.com



Scan me !

T-close K[®] - Adjustable textile shackle

« "Universal adjustable textile connector" »



T-close K[®], universal, multi-purpose textile shackle in Dyneema[®] with adjustable loop.

➤ Can be used in a wide range of situations, making it the 'Swiss Army knife' for your boat.

Uses

Universal adjustable Dyneema[®] textile connector for blocks, booms, sheets, halyards, sails, lazy-bags, etc.

How to change the length of the loop :

➤ Slide the T-close connector, then lock with the Grip[®] Knot.

Advantages

- Adjustable and multi-purpose
- Secure "under load and off load" locking
- Easy to install and open, even under heavy load
- Highly UV-resistant and excellent abrasion resistance

References

| | |
|------------|-------|
| Shackle K2 | 20001 |
| Shackle K3 | 20002 |
| Shackle K5 | 20003 |
| Shackle K6 | 20004 |
| Shackle K8 | 20005 |

| | |
|--------------|-------|
| Shackle K2 S | 20190 |
| Shackle K3 S | 20191 |
| Shackle K5 S | 20192 |
| Shackle K6 S | 20193 |
| Shackle K8 S | 20194 |

Nodus Tips

- Used with the Block ring and a friction ring, you now have a friction pulley,
- ✓ Be careful to cross the strands when fitting the ring.
- ✓ Tutorial available on our YouTube channel

NODUS
FACTORY
MADE IN FRANCE

Parc d'Activités de Laroiseau • 5 rue Ella Maillart • F- 56000 Vannes
Tél : +33 (0)2 97 67 64 83 • Mail : sail@nodusfactory.com www.nodusfactory.com



Ms B[®] - Textile shackle with Dyneema[®] sheath

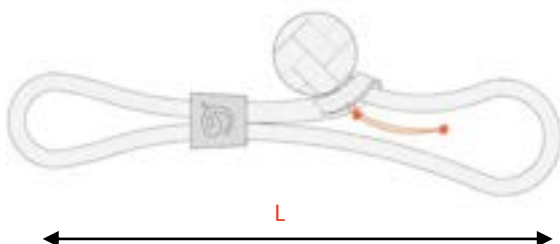
« "Dyneema[®] textile shackle »



| Product Name | Breaking Load | Lenght | Sail Area |
|-------------------|---------------|--------|-----------|
| Shackle « Bosco » | Direct | Closed | 40 kts |
| | Kg | cm | M2 |
| Ms B | 2 500 | 10 | 70 |

TECHNICAL SHEET

- Dyneema[®] SK78
- ✓ 48 plaits, coated for better protection and longevity of the textile fiber
- The length corresponds to the closed textile shackle
- The indicated load is the breaking load.
- Block[®] ring
- ✓ Clamping and retaining ring, made of flexible thermoplastic TPE, which enables a low-friction ring to be quickly locked and secured.



USE

- Textile Dyneema[®] shackle for connections between two elements: sheets, halyards, sails, mainsail tackles, hoists, etc.
- Easy to use → Pulling toggle
- Our Dyneema[®] sheathed textile shackles are designed for long-lasting use in the toughest conditions.

Information sail@nodusfactory.com

NØDUS
FACTORY
MADE IN FRANCE
www.nodusfactory.com



Scan me !

Ms B[®] - Textile shackle with Dyneema[®] sheath

« "Dyneema[®] textile shackle »



Nodusfactory[®] manufactures this high-quality textile shackle in pre-stretched Dyneema[®] sheath.

- The ideal connector for fittings on your sailboat.
- More durable, lighter and more reliable than stainless steel carabiners or shackles.

Our textile shackles are made from a Dyneema[®] braid with a hot-enzymatic coating to give the fibers greater resistance to wear over time.

Advantages

- Very good abrasion resistance
- Opening pull and captive system - Block[®] Ring
- Several lengths available on request
- Bosco knot / Laminated knob loop

Technical information

- coated Dyneema[®] for better protection and longevity of the textile fiber
- The length corresponds to the closed textile shackle
- The indicated load is the breaking load.
- Block[®] Ring, clamping and retaining ring, made of flexible Thermoplastic TPE, which enables a low-friction ring to be clamped and secured quickly.

Reference

| | |
|--------------|-------|
| Shackle Ms-B | 20213 |
|--------------|-------|

NODUS
FACTORY
MADE IN FRANCE

Parc d'Activités de Laroiseau • 5 rue Ella Maillart • F- 56000 Vannes
Tél : +33 (0)2 97 67 64 83 • Mail : sail@nodusfactory.com www.nodusfactory.com



Shackle C® - Halyard & Sheet

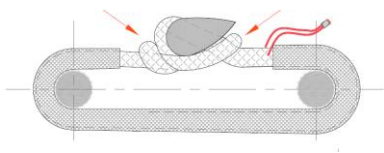
« Dyneema® fiber textile connector »



| Product Name | Breaking load | Ø rope | Length | Weight | Sail area |
|-------------------|---------------|----------|--------|---------|-----------|
| Connector | Direct | Dyneema® | Close | | 40 kts |
| T-Close / PA Tech | Kg | mm | cm | gr | M2 > 45° |
| C 3 | 840 | 2,5 | 4 | 4 / 6 | 20 / 50 |
| C 5 | 1800 | 4 | 7 | 12 / 14 | 50 / 70 |
| C 6 | 2500 | 5 | 8 | 28 / 30 | 70 / 90 |
| C 8 | 4600 | 7 | 8 | 45 / 47 | 90 / 140 |

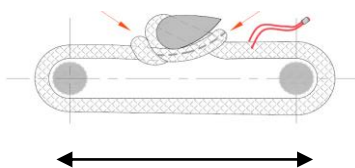
TECHNICAL SHEET

- T-close® connector → Glass-filled Pa Tech
- ✓ 100% Dyneema® rope pre-stretched, coated → Light grey / black
- Finish according to use :
 - ✓ Light / coated light grey or black
 - ✓ Intensive / coated and polyester sheath cover
- Technical / coated and sewn Dyneema® 48 plaits cover
- Accessories :
 - ✓ Block® Ring → flexible thermoplastic TPE
 - ✓ Twist-lock® → Velcro strap



USE

- Textile connector for linking two elements: sheets, halyards, mainsail planks, headsails, tackle, etc.
- Easy to use → Closes with the Cap Knot® → Opens quickly even under heavy load



Information sail@nodusfactory.com

NODUS
FACTORY

MADE IN FRANCE

www.nodusfactory.com



Scan me !

Shackle C[®] - Halyard & Sheet

« Dyneema[®] textile connector »



Textile C[®] shackle in pre-stretched and coated Dyneema[®] specially designed for halyards and sheets with an eye terminal.

Advantages

- ❑ Very good UV factor 5 and abrasion resistance
- ❑ The flexibility of the textile ensures that the work is in line with the axes of the efforts
- ❑ 10 x lighter than a stainless steel shackle of equivalent strength
- ❑ Veritas-certified resistance

Specifications

- Dyneema[®] connector with self-locking safety closure (See tutorial)
- Can be used with Block[®] Ring or security toggle
- No need for a halyard stop, thanks to the T-close[®] dog bone

Nodus Tips

- Upgrade your existing sheets and halyards with our ready-to-match lines

References

| Standard | |
|----------|-------|
| C 3 | 20006 |
| C 5 | 20007 |
| C 6 | 20008 |
| C 8 | 20009 |

| Intensive | |
|------------------|-------|
| C 3 + gaine poly | 20301 |
| C 5 + gaine poly | 20302 |
| C 6 + gaine poly | 20303 |
| C 8 + gaine poly | 20304 |

| Technical | |
|------------------|-------|
| Cs 3 + gaine Dyn | 20199 |
| Cs 5 + gaine Dyn | 20200 |
| Cs 6 + gaine Dyn | 20201 |
| Cs 8 + gaine Dyn | 20202 |

NODUS
FACTORY
MADE IN FRANCE

Parc d'Activités de Laroiseau • 5 rue Ella Maillart • F- 56000 Vannes
Tél : +33 (0)2 97 67 64 83 • Mail : sail@nodusfactory.com www.nodusfactory.com



Shackle MHL® - flexible Dyneema® shackle

« Textile sheathed connector »



| Product Name | Breaking Load SK78 | Breaking Load SK99 | Weight | Length L | | | Sheave Ø | Sail Area |
|----------------|--------------------|--------------------|--------|----------|----|----|-------------|-----------------|
| | | | | S | M | L | | |
| | Direct kg | Direct kg | gr | cm | cm | cm | Cons. mm | 40 kts R2/m2 |
| M 8 HI | 3600 | 4800 | 12 | 4,5 | 9 | 10 | 30/40 | 100 |
| M 10 HI | 6000 | 8000 | 21 | 5 | 10 | 12 | 40/50 | 170 |
| M 12 HI | 6700 | 10000 | 42 | 6 | 12 | 14 | 50/60 | 185 |
| M 14 HI | 10000 | 14000 | 67 | 6 | 14 | 16 | 60+ | 300 |

TECHNICAL SHEET

- T-bône® connector
- ✓ Hard anodized 7075 aluminium
- 100% Dyneema® core and sheath
- ✓ SK78 or SK99 12 plaits pre-stretched, coated ↪ Light grey / black
- ✓ Block® ring ↪ flexible thermoplastic TPE

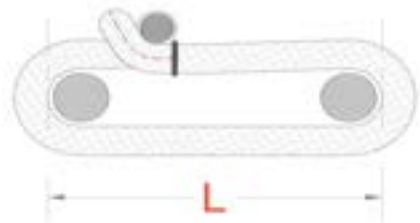
M HL shackle range:

- Coating for general use
- Technical use: "Dyneema® 48 plaits Surge".



USE

- Ideal as a flexible textile connector for mainsail headstays, blocks, low-friction rings, backstay connections, etc.
- Secure shackle eye closure with Block® Ring or Twist-Lock®.



Information sail@nodusfactory.com

NODUS
FACTORY

MADE IN FRANCE

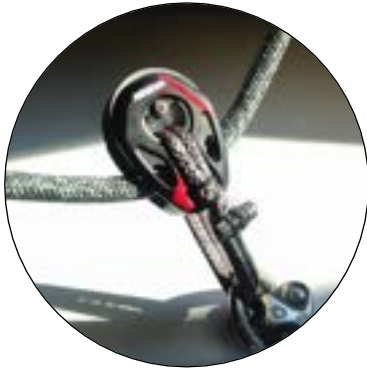
www.nodusfactory.com



Scan me !

Shackle MHL[®] - flexible Dyneema[®] shackle

« Textile sheathed connector »



M[®] High Load is a multi-purpose Dyneema[®] textile shackle for heavy loads. The technical feature of the M[®] shackle is that it is both core and sheath, providing greater strength and better protection than a conventional textile shackle.

Advantages

- Ease of use → Closure → Cap[®] knot → Quick opening even under heavy load
- The flexibility of the textile ensures that the work is in line with the axes of the efforts
- High UV resistance and excellent abrasion resistance

Technical information

- coated Dyneema[®] for better protection and durability of the textile fiber
- The length corresponds to the closed textile shackle
- The indicated load is the breaking load.
- Block[®]Ring, clamping and retaining ring, made of flexible Thermoplastic TPE, for quick clamping and securing of a low-friction ring.

References

| SK78 | SMALL | MEDIUM | LARGE |
|------|-------|--------|-------|
| M6 | 20018 | 20023 | 20028 |
| M8 | 20019 | 20024 | 20029 |
| M10 | 20020 | 20025 | 20030 |
| M12 | 20021 | 20026 | 20031 |
| M14 | 20022 | 20027 | 20032 |

Nodus Tips

- Optimise your shackle by checking the sheave size, CMU or BWL of your pulleys!

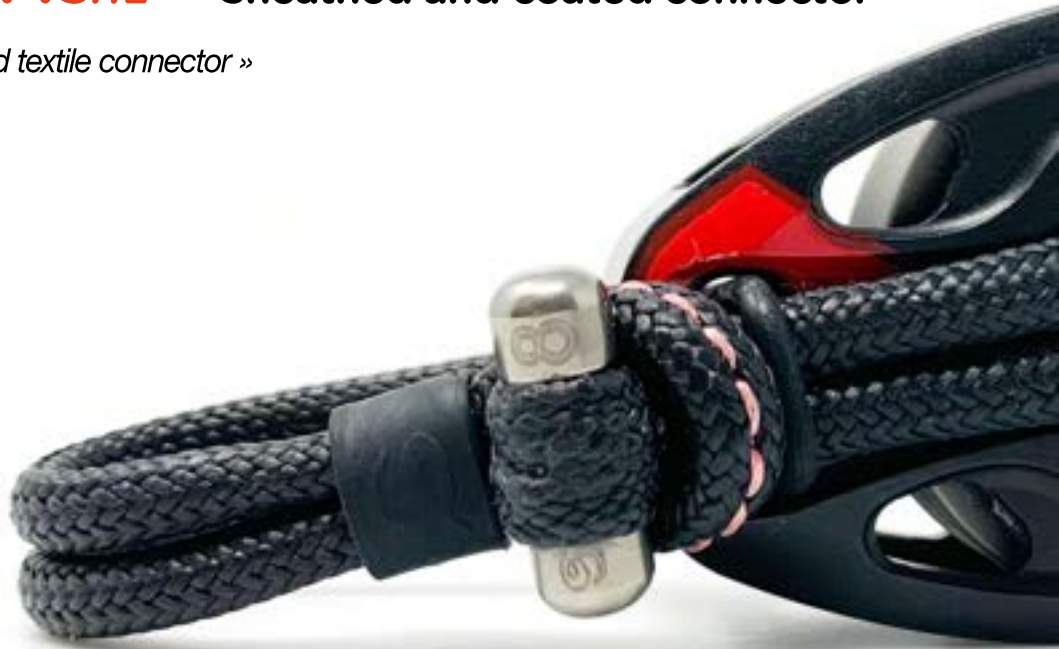


Parc d'Activités de Laroiseau • 5 rue Ella Maillart • F- 56000 Vannes
Tél : +33 (0)2 97 67 64 83 • Mail : sail@nodusfactory.com www.nodusfactory.com



Shackle MSHL[®] – Sheathed and coated connector

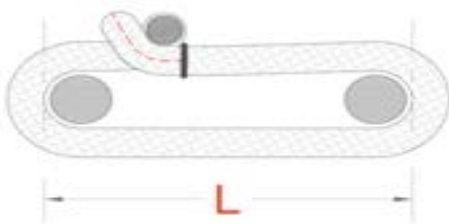
« High-load overbraided textile connector »



| Product Name | Breaking Load | | Weight | Length L | | | Sheave Ø | Sail Area |
|-----------------|---------------|--------|--------|----------|----|----|----------|-----------|
| | SK78 | SK99 | | S | M | L | | |
| | Direct | Direct | | S | M | L | | 40 kts |
| | kg | kg | gr | cm | cm | cm | mm | m2 |
| Ms 8 HI | 4000 | | 16 | 8 | 10 | 12 | 30/40 | 100 |
| Ms 10 HI | 6000 | 8000 | 29 | 8 | 10 | 12 | 40/50 | 200/220 |
| Ms 12 HI | | 10000 | 45 | 10 | 12 | 14 | 50/60 | 275 |
| Ms 14 HI | | 14000 | 69 | | 14 | 16 | 60+ | 380 |

TECHNICAL SHEET

- ❑ T-bône® connector
- ✓ Hard anodized 7075 aluminium
- ❑ 100% Dyneema® core
- ✓ SK78 or SK99 12 plaits pre-stretched, coated → Light grey / black
- ❑ 100% Dyneema® sheath
- ✓ SK78 48 plaits coated black
- ✓ Block® ring → flexible thermoplastic TPE



USE

- ❑ Ideal as a flexible textile connector for Mainsail edge, blocks, hoists, runner connections, forestay bases, etc.
- ❑ Secure shackle eye closure with Block® Ring or Twist-Lock®.



Information sail@nodusfactory.com

NODUS
FACTORY

MADE IN FRANCE

www.nodusfactory.com



Scan me !

Shackle M_{SHL}[®] – Sheathed and coated connector

« High-load overbraided textile connector »



M_s[®] High Load, is a multi-purpose Dyneema[®] textile shackle for heavy loads.

➤ The special feature of this product is that it is overbraided for extra protection and exceptional durability.

Use

❑ Ideal as a flexible textile connector for pulleys, halyards, runners, forestays, hoists, etc.

Advantages

- ❑ Easy to use → Closure → Cap[®] knot → Quick opening even after heavy load
- ❑ The flexibility of the textile ensures that the work is in line with the axes of the efforts
- ❑ The eye of the shackle is securely closed by a lock-ring joint
- ❑ UV and abrasion resistant

Specifications

- ❑ T-bone[®] connector, hard anodized aluminium 7075
- ❑ Textile shackle, core and sheath 100% Dyneema[®] SK78 or SK99 12 plaits pre-stretched coated → Grey black
- ❑ Textile sheath 100% pre-stretched Dyneema[®] SK78 48 plaits & enzymatic protective coating → Black
- ❑ Block[®] ring → flexible thermoplastic TPE Connector T-bone[®], hard anodized aluminium 7075

References

| SK78 | SMALL | MEDIUM | LARGE |
|-------------------|-------|--------|-------|
| M _s 8 | 20033 | 20035 | 20037 |
| M _s 10 | 20034 | 20036 | 20038 |
| M _s 12 | 20180 | 20178 | 20039 |
| M _s 14 | | 20179 | 20040 |

Nodus Tips

➤ Optimise your shackle by checking the sheave size, CMU or BWL of your pulleys !



Parc d'Activités de Laroiseau • 5 rue Ella Maillart • F- 56000 Vannes
Tél : +33 (0)2 97 67 64 83 • Mail : sail@nodusfactory.com www.nodusfactory.com



Shackle R® - Tackel shackle Block

« Textile connector & low-friction ring »



| Product Name | Breaking Load | Weight | Length | Recommended line Ø | Sail Area |
|--------------|---------------|--------|--------|--------------------|-----------|
| | Straight | | Closed | Halyard/Sheet | 40 kts |
| | kg | gr | cm | mm | m2 |
| R 3 | 700 | 7 | 10 | 4/6 | 20 |
| R 5 | 1750 | 10 | 14 | 6/8 | 50 |
| R 6 | 2500 | 12 | 20 | 8/10 | 75 |

TECHNICAL SHEET

- T-close® connector
- ✓ glass-filled PA Tech
- 100% Dyneema®
- ✓ SK78 12 plaits pre-stretched, coated → Light grey / black
- Technical range, 100% Dyneema® sheath
- ✓ SK78 48 plaits coated black
- FRD low-friction ring in hard anodized aluminium Dark grey/black
- Block® ring → flexible thermoplastic TPE



USE

- Halyard shackle, 2:1 flying block type, for reefing halyards, tack lines, barber-haulers, etc.
- Quick to fit on chainplate, bridges and shroud rails for sheeting.
- Easy to use → Closure → Cap® knot → Quick opening even after heavy load

Information sail@nodusfactory.com

NODUS
FACTORY

MADE IN FRANCE

www.nodusfactory.com



Scan me !

Shackle R® - Tackel shackle Block

Textile connector & low-friction ring



R® shackle, Dyneema® reefing shackle with FrD low friction ring.

❑ For use with reefed mainsail halyard, foot (2:1 tackle)...

Advantages

- ❑ Extremely light and strong friction ring hoist
- ❑ The flexibility of the textile ensures that the work is in line with the axes of the efforts

Technical information

- ❑ T-close® connector, - Glass-filled Pa Tech
- ❑ Rope, 100% pre-stretched Dyneema® SK78, coated - Light grey/black
- ❑ Low-friction ring, hard anodized aluminium - Grey/black.

References

| | |
|------------|-------|
| Shackle R3 | 20343 |
| Shackle R5 | 20345 |
| Shackle R6 | 20346 |

Nodus Tips

- Choose your reefing shackle according to the diameter and strength of your rope!

NODUS
FACTORY
MADE IN FRANCE

Parc d'Activités de Laroiseau • 5 rue Ella Maillart • F- 56000 Vannes
Tél : +33 (0)2 97 67 64 83 • Mail : sail@nodusfactory.com www.nodusfactory.com



Shackle R-Nub® - flexible tackel Shackle

"Textile connector & low-friction pulley «



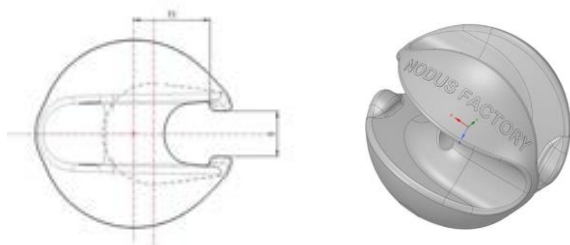
| Product Name | Breaking load | Weight | Length | Ø Advisable rope | Sail area |
|----------------|---------------|--------|--------|------------------|-----------|
| | Straight | | Closed | Halyard / sheet | 40 kts |
| | kg | gr | cm | mm | m2 |
| R 6 Nub | 2500 | 12 | 12 | 8/10 | 75 |
| R 8 Nub | 3600 | 12 | 14 | 10/12 | 100 |

TECHNICAL SHEET

- T-close® connector
- ✓ glass-filled PA Tech
- 100% Dyneema® fiber
- ✓ SK78 12 plaits pre-stretched, coated → Light grey / black
- Technical range, 100% Dyneema® sheath
- ✓ SK78 48 plaits coated black
- Nub® low-friction pulley in black technical polymer
- Block® ring → flexible thermoplastic TPE

USE

- Halyard shackle, 2:1 flying block type, for reefing halyards, tack lines, barber-haulers, etc.
- Quick to fit on chainplate, padeyes and shroud rails for sheeting.
- Easy to use → Closure → Cap® knot → Quick opening even after heavy load



Information sail@nodusfactory.com

NODUS
FACTORY

MADE IN FRANCE

www.nodusfactory.com



Scan me !

Shackle R-Nub® - flexible tackel Shackle

"Textile connector & low-friction pulley «



Nub® R shackle, Dyneema® reefing shackle and Nub® low-friction block.
For use with reefed mainsail halyards, tackles (2:1 tackle)...

Advantages

- Extremely light and strong friction block hoist
- The flexibility of the textile ensures that the work is in line with the axes of the efforts

Technical information

- T-close connector, - Glass-filled Pa Tech
- Rope, 100% pre-stretched Dyneema® SK78, coated - Light grey / black
- Low-friction pulley, in technical polymer - Black.

References

| | |
|------------------------------------|-------|
| Reeving flexible shackle R5 Nub | 20345 |
| Reeving flexible shackle R6 Nub | 20346 |

Nodus Tips

- Choose your R Nub® reefing shackle according to the diameter and strength of your rope !

NODUS
FACTORY
MADE IN FRANCE

Parc d'Activités de Laroiseau • 5 rue Ella Maillart • F- 56000 Vannes
Tél : +33 (0)2 97 67 64 83 • Mail : sail@nodusfactory.com www.nodusfactory.com



Textile® Snap hooks



Dyneema® carabiners

Our Dyneema® textile carabiners are quick-release, or releasable under load: high-performance textile fittings.

Textile carabiners can be used for halyards and sheets as well as for mooring your yacht.



1. The carabiner is a textile connector with a specific purpose and comes in a range of sizes depending on the type and sail area being used.
2. Your choice should be made according to the use
3. Dyneema® Nodusfactory™ textile carabiners have many advantages: lightness, mechanical strength, UV resistance and excellent abrasion resistance.



Indication of use and repairability!

Use criteria

The Nodus Factory criterion is based on wear resistance or breaking strength.

- Current - C
- Intensive - I
- Technical - T (S & HL)

Repairability index

Category 1:

Repair only by Nodusfactory™, concerns Dyneema® textile fiber (textile shackle on connector).

- Return us the connectors

Category 2:

Repair by the user, concerns part of the product components (sheath, tying string, Block® Ring, Twist Lock® strap,...)

- Sale of components online

Category 3:

Repair by user, concerns all product components that can be replaced

- Sale of components online

Please note :

Loop-type Dyneema® textile connectors are not repairable and are not included in our index criteria.

- Dyneema® T-Close and M textile shackles are factor 1 (except for intensive use).

However, Dyneema® textile loops and locks® combined with one or more accessories fall into category 3.

M T-close® - Halyard and sheet carabiner

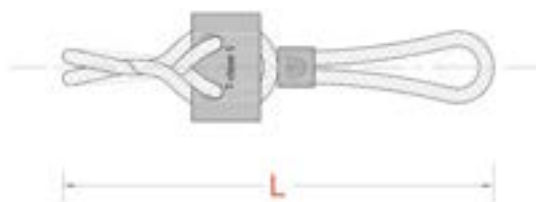
« Dyneema® Halyard & Sheet Connector »



| Product Name | Breaking Load | | Length L | | Eye Ø | Sail area |
|----------------|---------------|----|----------|----|-------|-----------|
| | Direct | | Closed | | | |
| | kg | gr | cm | mm | m2 | |
| M T-c 3 | 600 | 4 | 9 | 20 | 30 | |
| M T-c 5 | 1600 | 10 | 12 | 25 | 50 | |
| M T-c 6 | 2200 | 18 | 14 | 30 | 70 | |
| M T-c 8 | 3300 | 36 | 17 | 40 | 100 | |

TECHNICAL SHEET

- T-close® connector
- ✓ glass-filled PA Tech
- 100% Dyneema®
- ✓ SK78 12 plaits pre-stretched, coated → Light grey / black
- Technical range, 100% Dyneema® sheath
- ✓ SK78 48 plaits coated black
- Block® ring → flexible thermoplastic TPE



USE

- Quick snap shackle for halyards, jib sheets, genoa, reefing, reaching, etc.
- The snap shackle attaches directly to the lark's head:
 - on halyard and sheet with eye terminal
 - On chainplate and jib track

Information sail@nodusfactory.com

NØDUS
FACTORY

MADE IN FRANCE

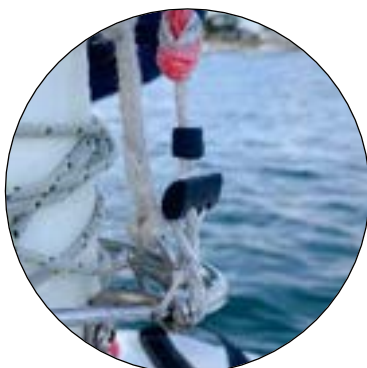
www.nodusfactory.com



Scan me !

M T-close® - Halyard and sheet carabiner

« Dyneema® Halyard & Sheet Connector »



M T-close, textile Dyneema® carabiner for halyard and sheet.

- Quick, effortless opening and closing
- No halyard stopper required

Advantages

- ❑ Lightweight and quick to install
- ❑ The flexibility of the textile ensures that the work is in line with the axes of the efforts
- ❑ Easy to use → Closure → Cap® knot → Quick opening
- ❑ Highly resistant to UV and abrasion

Technical information

- ❑ T-close connector → glass-filled PA Tech
- ❑ 100% Dyneema® SK78 pre-stretched rope, coated → Light grey / black
- ❑ Block® ring - flexible thermoplastic TPE

References

| | |
|--------|-------|
| M T-c3 | 20047 |
| M T-c5 | 20048 |
| M T-c6 | 20049 |
| M T-c8 | 20050 |

Nodus TIPS

- Use the T-close® carabiner when reefing on the tack

NODUS
FACTORY
MADE IN FRANCE

Parc d'Activités de Laroiseau • 5 rue Ella Maillart • F- 56000 Vannes
Tél : +33 (0)2 97 67 64 83 • Mail : sail@nodusfactory.com www.nodusfactory.com



Snap shackle T-sail® - Spi & gennaker

« Dyneema® connector »



| Product Name | Breaking load | Weight | Length L | Ø eye sheet | Sail area |
|--------------|-----------------|--------|----------|-------------|-----------|
| | Tête d'alouette | | Droite | Utile | 40 kts |
| | kg | gr | cm | mm | m2 |
| M T-Sail 5 | 1000 | 8 | 10 | 35 | 60 |
| M T-Sail 6 | 1700 | 18 | 11 | 40 | 90 |
| M T-Sail 7 | 2700 | 32 | 12 | 45 | 140 |

TECHNICAL SHEET

- T-Sail® connector, Pa Tech black
- 100% Dyneema®
- SK78 pre-stretched, coated 12 plaits → Light grey/black
- T-Sail S model → with Dyneema® sheath SK78 36 plaits
- Block® ring - flexible thermoplastic TPE



USE

- Designed for downwind sail sheets with eye terminations:
 - To attached directly to the head of the lark on the sheet, requires the use of our Textile-Block® attachment system on the sail.
 - To attach directly to the sail at the head of the lark (clew) requires an eye at the end of the sheet, see table.

Information sail@nodusfactory.com

NODUS
FACTORY

MADE IN FRANCE

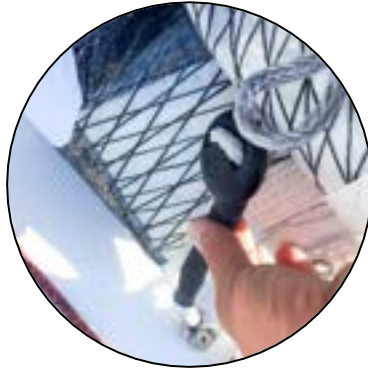
www.nodusfactory.com



Scan me !

Snap shackle T-sail® - Spi & gennaker

« Dyneema® connector »



M T-sail®, snap-shackle for spinnakers and gennakers

➤ is easy to use, extremely lightweight and simple to install.

Advantages

- ❑ Very light and resistant
- ❑ Opening and ultra-fast locking system

Nodus Tips

- Use the T-sail® to reef your jib tack
- Order your sheets from Nodus Factory, the eye will be adapted to your T-Sail snap shackle delivered with the Block® ring.

References

| | |
|--------|-------|
| M T-S5 | 20053 |
| M T-S6 | 20054 |
| M T-S7 | 20055 |

Option

- ❑ Textile-Block®: attachment device designed for the sail clew (ring, strap, etc.). Loop made of Dyneema® and supplied with a Block® Ring locking ring.

NODUS
FACTORY
MADE IN FRANCE

Parc d'Activités de Laroiseau • 5 rue Ella Maillart • F- 56000 Vannes
Tél : +33 (0)2 97 67 64 83 • Mail : sail@nodusfactory.com www.nodusfactory.com



Snap shackle T-drop® - Release under load

« "Dyneema® carabiner for release under load »



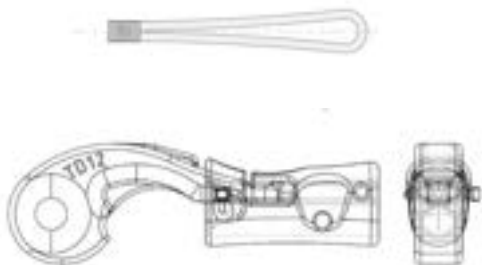
| Product Name | Breaking Load | Weight | Length T-drop | Total Length | Sail area |
|--------------|---------------|--------|---------------|--------------|-----------|
| | | | fermé | | 25 kts |
| | kg | gr | cm | cm | M2 |
| M T-d 12 | 800 | 22 | 9 | 18 | 75 |

TECHNICAL SHEET

- T-drop® connector, Pa Tech black
- 100% Dyneema®
- SK78 pre-stretched, coated 48 plaits → black

Option

- Textile-Block®: attachment device designed for the sail clew (ring, strap, etc.). Loop made of Dyneema® and supplied with a Block® Ring locking ring.



USE

Snap hook to open under load to connect two elements :

- spi, gennaker.
- Ideal as a carabiner for a wire

Information sail@nodusfactory.com

NODUS
FACTORY

MADE IN FRANCE

www.nodusfactory.com



Scan me !

Snap shackle T-drop® - Release under load

« "Dyneema® carabiner for release under load »



M T-drop® is a load release carabiner for light winds and light sails.

- Very light, easy to use, with secure pin closure.
- No opening pin required.

Advantages

- Can be released under load, does not jam
- Possibility of fitting a release line (pull cord)
- Very light

References

| | |
|---------|-------|
| M-Tdrop | 20056 |
|---------|-------|

Nodus TIPS

- Attaching to the sail → The pelican hook is placed directly in the clew or halyard or via a Textile-Block®.
- Closing the carabiner → Push up the locking ring, secure with the pin
- Releasing under load → Remove the safety pin, pull on the locking ring



NØDUS
FACTORY
MADE IN FRANCE

Parc d'Activités de Laroiseau • 5 rue Ella Maillart • F- 56000 Vannes
Tél : +33 (0)2 97 67 64 83 • Mail : sail@nodusfactory.com www.nodusfactory.com



Mf® T-close - Jib sail carabiner

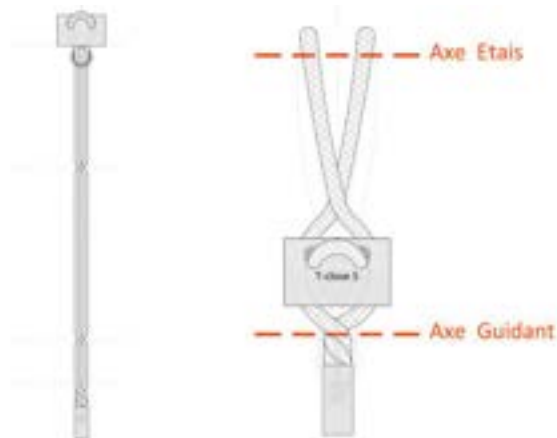
« Dyneema® jib rings »



| Product Name | Breaking Load | Weight | Length luff/stay | Sail area |
|--------------|---------------|--------|------------------|-----------|
| | Straight | | Closed Loop | 40 kts |
| | kg | gr | mm | m2 |
| Mf 3.2 | 500 | 4 | 20 | 60 |
| Mf 3.4 | 500 | 5 | 40 | 60 |
| Mf 3.6 | 500 | 6 | 60 | 60 |
| Mf 5.4 | 800 | 11 | 40 | 110 |
| Mf 5.6 | 800 | 12 | 60 | 110 |

TECHNICAL SHEET

- T-close® connector
- ✓ glass-filled PA Tech
- 100% Dyneema®
- ✓ SK78 12 plaits pre-stretched, coated → Light grey / black
- Lock-Ring® seal → EPDM UV resistant



USE

- Jib hitch for securing a headsail ~ ideal for jibs, stormjibs, staysails, etc.
- Great replacement for metal jib hanks and rings
- Easy to use, one-hand closure → Cap Knot® ; Quick opening

Information sail@nodusfactory.com

NØDUS
FACTORY

MADE IN FRANCE

www.nodusfactory.com



Scan me !

Mf[®] T-close - Jib sail carabiner

« Dyneema[®] jib rings »



Mf T-close is a jib snap shackle, also known as a jib ring, ideal for securing headsails to metal or textile forestays.

➤ Fitted directly onto the sail's eyelet, seamless, captive and quick and easy to fasten.

Advantages

- Waterproof: secure closure with lock-ring seal
- Excellent abrasion resistance on metal or textile forestay
- 10 x lighter than a metal jib hanger with equivalent strength
- Prevents rust on sails
- Does not damage decks
- Easy to use → Closure → Cap[®] knot → Quick opening

References

| | |
|--------|-------|
| Mf 3.2 | 20041 |
| Mf 3.4 | 20042 |
| Mf 3.6 | 20043 |
| Mf 5.2 | 20044 |
| Mf 5.4 | 20045 |
| Mf 5.6 | 20046 |

NODUS
FACTORY
MADE IN FRANCE

Parc d'Activités de Laroiseau • 5 rue Ella Maillart • F- 56000 Vannes
Tél : +33 (0)2 97 67 64 83 • Mail : sail@nodusfactory.com www.nodusfactory.com



Textile Loop & Lock®



Dyneema® textile Loops & Locks®

Discover our textile fittings dedicated to leisure sailing, boating, blue water cruising, regattas and ocean racing.



Nodus Factory offers you a complete range of textile Loops, Locks® and Textile Fuse connectors - patented products developed by our R&D team.



Reliable, robust and certified products designed for sailing, often copied but never equalled.



Our Locks® loops and connectors are "forged in the metal of the future", Dyneema® and Technora®, and are the ideal accessories for rigging and equipping your yacht.



Nodus Factory™ uses the excellence of new-generation materials from aerospace, aeronautics and ocean racing.



Our "Lock®" zippable eye loops and textile connectors are tomorrow's universal 4.0 fittings, ideal as multi-purpose flexible connectors for :
Pulleys, low-friction rings (Polymer, duralumin or 4.0 iTech PO), Nub pulley, etc...

Load forces as a function of deflection angle!

When choosing fittings or ropes for your deck layout, you should bear in mind that the force exerted by the rope on a block, friction ring or Nub must take into account a coefficient determined by the angle of the forces exerted by the rope. (see table below)

For example:

A low-friction ring that returns a rope at 180° is subjected to a load equal to 2 x its load, On the other hand, when a rope is returned at 30° with a Barber Hauler, a return block or a Hook, the load is only 52%.

At the foot of the mast, it is preferable to use Duralumin or Nub® rings rather than resin rings, as they are subjected to greater forces at 90°, i.e. x 140%.

Remember that the maximum sail area values given in our tables should be reduced by 40% to choose your low-friction rings.

Comparative table :

| Deflection angle | Coefficient of load |
|------------------|---------------------|
| 180° | 200% |
| 160° | 197% |
| 140° | 187% |
| 120° | 173% |
| 90° | 141% |
| 75° | 122% |
| 60° | 100% |
| 45° | 76% |
| 30° | 52% |
| 20° | 35% |

The sail area values given in our tables must take into account both the angle of the forces given by the rope and the wind speed, just a reminder...!

Loop HL[®] - Sheathed Dyneema[®] loop

« High-load Dyneema[®] loop connector »



| Product Name | Breaking Load | | Weight | Length L | | | | | Sheave Inside Ø |
|-----------------|---------------|----------|--------|----------|----|----|----|----|-----------------|
| | Basket | Basket | | XS | S | M | L | XL | Pulley |
| | DSK78 kg | DSK99 kg | gr | cm | cm | cm | cm | cm | mm |
| L 2.5 HI | 2000 | 3000 | 3 | 14 | 16 | 19 | 22 | | 20 |
| L 3 HI | 3800 | 5500 | 4 | | 16 | 19 | 22 | | 30 |
| L 4 HI | 6300 | 9500 | 11 | | 16 | 19 | 22 | 28 | 40 |
| L 5 HI | 8000 | 12500 | 18 | | | 19 | 22 | 28 | 50 |
| L 6 HI | 9500 | 14000 | 24 | | | 19 | 22 | 28 | 60 |

TECHNICAL SHEET

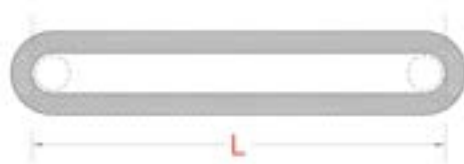
- 100% Dyneema[®]
- ✓ SK78 12 plaits pre-stretched, coated → Light grey / black
- Technical range, 100% Dyneema[®] overbraided
- SK78 48 plaits coated black



- Accessory
- ✓ Block[®] ring → flexible thermoplastic TPE
- ✓ Twist-Lock[®] velcro strap

USE

- Textile connector for outhaul and jib blocks, boom and spar blocks (spinnaker pole, bowsprit, etc.), backstay and runners to tackle blocks.
- Ideal for webbing blocks and low-friction rings used as "return blocks".



Information sail@nodusfactory.com

NODUS
FACTORY

MADE IN FRANCE

www.nodusfactory.com



Scan me !

Loop HL[®] - Sheathed Dyneema[®] loop

« High-load Dyneema[®] loop connector »



The "High Load" Dyneema[®] -sheathed Loop[®] is a textile ring, ideal as a flexible connector.

- The special technical feature of our Loop[®] is that it is both core and sheath, providing greater strength and better protection than a conventional loop.
- The loop is available in Dyneema[®] SK78 or SK99 for a breaking load adapted to your needs.

Advantages

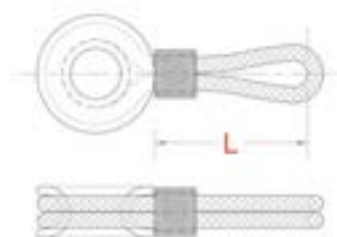
- ❑ Very light, excellent tensile strength and breaking strength
- ❑ The flexibility of the textile ensures that the work is in line with the axes of the efforts
- ❑ Highly UV-resistant and excellent abrasion resistance

Technical information

- ❑ Textile loop, core and sheath 100% pre-stretched Dyneema[®] 12 plaits, coated – Light grey / black
- ❑ Block[®] ring – flexible thermoplastic TPE
- ❑ Usa category according to your needs: standard / intensive / technical

References

| HL | X SMALL | SMALL | MEDIUM | LARGE | X LARGE |
|------|---------|-------|--------|-------|---------|
| L2,5 | 20168 | 20171 | 20062 | 20067 | |
| L3 | | 20058 | 20063 | 20068 | |
| L4 | | 20059 | 20064 | 20069 | 20072 |
| L5 | | 20060 | 20065 | 20070 | 20073 |
| L6 | | 20061 | 20066 | 20071 | |



Nodus Tips

- Optimise your loop by checking the sheave size, CMU or SWL of your pulleys!

NODUS
FACTORY
MADE IN FRANCE

Parc d'Activités de Laroiseau • 5 rue Ella Maillart • F- 56000 Vannes
Tél : +33 (0)2 97 67 64 83 • Mail : sail@nodusfactory.com www.nodusfactory.com



Loop S HL® « with sheath » - Loop High load

« Overbraided Dyneema® loop for high loads »



| Product Name | Breaking Load | | Weight | Length L | | | | Sheave Inside Ø |
|----------------|---------------|---------|--------|----------|----|----|----|-----------------|
| | Basket | Basket | | XS | S | M | L | |
| | SK78 kg | SK99 kg | Gr | cm | cm | cm | cm | Pulley mm |
| Ls 2 HI | 2000 | 3000 | 10 | 7 | 20 | 22 | | 20-30 |
| Ls 3 HI | 3800 | 5500 | 13 | 9 | 20 | 22 | | 30-50 |
| Ls 4 HI | 6300 | 9500 | 19 | 11 | 20 | 22 | 26 | 50-60 |

TECHNICAL SHEET

- 100% Dyneema® long-braided core
- ✓ SK78 12 plaits pre-stretched, enzyme-coated → Light grey / black
- ✓ SK99 12 plaits pre-stretched, coated → Light grey / black
- 100% Dyneema® cover
- ✓ SK78 48 plaits coated black
- Protect Coating® treatment - Polymer hardener
- Accessories
- ✓ Block® ring → flexible thermoplastic TPE
- ✓ Twist-Lock® velcro strap

USE

- Textile connector for clew, jib, boom and spar track blocks (spinnaker pole, bowsprit, etc.) connecting backstays and runners to tackle blocks.
- Ideal for webbing blocks



Information sail@nodusfactory.com

NØDUS
FACTORY
MADE IN FRANCE
www.nodusfactory.com



Scan me !

Loop S HL[®] « with sheath » - Loop High load

« Overbraided Dyneema[®] loop for high loads »



Loop[®] High Load in Dyneema[®] SK78 or SK99 is a textile ring for high loads, ideal as a flexible connector.

- The special feature of this product is that it is manufactured with a Dyneema[®] protective sheath and a Protect-Coating Polymer[®] treatment.

Advantages

- Very light, excellent tensile strength and breaking strength
- The flexibility of the textile ensures that the work is in line with the axes of the efforts
- Highly UV-resistant and excellent abrasion resistance

Technical information

- 100% Dyneema[®] 12 plaits pre-stretched, coated core → Light grey / black
- ✓ Oversheath in pre-stretched, coated Dyneema[®] 48 plaits → black
- Accessories
- ✓ Block[®] ring → flexible thermoplastic TPE

References

| HL | X small | SMALL | MEDIUM | LARGE |
|-----|---------|-------|--------|-------|
| Ls2 | 20084 | 20087 | 20090 | |
| Ls3 | 20085 | 20088 | 20091 | |
| Ls4 | 20086 | 20089 | 20092 | 20093 |

Nodus Tips

- Choose your loops by checking the sheave size, CMU and SWL of your pulleys!

NODUS
FACTORY
MADE IN FRANCE

Parc d'Activités de Laroiseau • 5 rue Ella Maillart • F- 56000 Vannes
Tél : +33 (0)2 97 67 64 83 • Mail : sail@nodusfactory.com www.nodusfactory.com



Textile Lock® - Fastener with adjustable eye

« Adjustable, universal Dyneema® loop for low-friction rings »



| Product Name | Breaking Load Kg | Weight | Length L (+/- 5mm) | |
|--------------|------------------|--------|-----------------------|-----|
| | Basket | | | Max |
| | kg | gr | cm | mm |
| Lock 3 | 3800 | 14 | 16 | 30 |
| Lock 4 | 6300 | 21 | 22 | 40 |
| Lock 5 | 8000 | 51 | 28 | 45 |

TECHNICAL SHEET

- Fastener with adjustable eye, 100% pre-stretched Dyneema® SK78 12 plaits, coated - Light grey / black
- System-Lock®
- Intensive overbraided PES (Lock), 100% HD polyester Black & Orange
- Technical Dyneema® (lock), 100% Dyneema® SK78 48 plaits - Black
- Twist-Lock® accessory
- Velcro® Polypropylene & Velour PA

Textile strop for friction Rings and Nub®

Lock 3 - Ø ring FR10 (static use) /FRD10 (dynamic use)

Lock 4 - Ø ring FR14 (static use) /FRD14 (dynamic use)

Lock 5 - Ø ring FR20 (static use) /FRD20-25 (dynamic use) / Nub 40



INSTALLATION

1. Open the Textile-Lock by sliding the sheath downwards.
- 2- Fit the accessory (friction ring, NUB, etc.).
- 3-Put the product in position with the two strands around the accessories, trigger guard, chainplate, reefing catch, etc.
- 4-Close the Textile-Lock on the ring by sliding the sheath upwards.
- 5-Lock the rope strands with the Twist-Lock® accessory.



Information sail@nodusfactory.com

NØDUS
FACTORY

MADE IN FRANCE

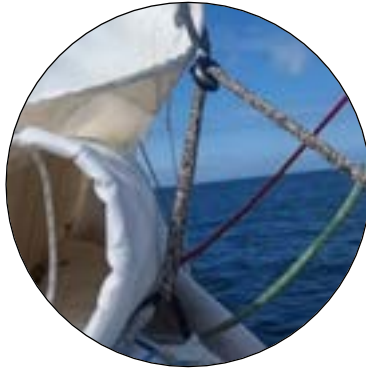
www.nodusfactory.com



Scan me !

Textile Lock® - Fastener with adjustable eye

« "Adjustable, universal Dyneema® loop for low-friction rings »



The **Textile Lock-B®** is a Dyneema® textile connector with an adjustable, self-tightening constrictor eye designed to quickly and securely attach low-friction rings without spicing.

- A bi-stranded flexible textile connector for high loads ideal for reefing hooks placed on top of the boom fitting axis.

Perfect for connecting your friction rings and for reefing on the mainsail

Applications

- Dyneema® textile connector with adjustable eye for low-friction rings of different sizes (see table)
- Double-strand basket or single-strand lark's head attachment

Advantages

- No spicing skills required to attach a ring
- Unique Loop / Dyneema® loop with adjustable eye and positive safety in boating
- Easy to use, reversible → Symmetrical buckle → Secure closure on both sides
- Abrasion and UV resistant

References

| | |
|---------|-------|
| LOCK 3i | 20254 |
| LOCK 3t | 20255 |
| LOCK 4t | 20252 |
| LOCK 5t | 20256 |



NODUS
FACTORY
MADE IN FRANCE

Parc d'Activités de Laroiseau • 5 rue Ella Maillart • F- 56000 Vannes
Tél : +33 (0)2 97 67 64 83 • Mail : sail@nodusfactory.com www.nodusfactory.com



LR[®] - Loop and Ring « Adjustable Dyneema[®] loop »

"Universal adjustable textile connector for low friction ring".



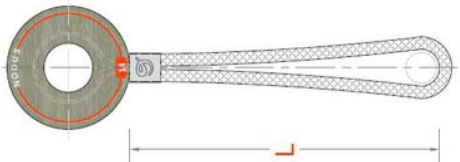
| Product Name | Breaking load Kg | Diameter | Length L | Ø Eye | Sail area M2 |
|--------------------------|---------------------------|----------|----------|-------|--------------|
| Loop ajustable universel | Dyneema [®] SK78 | mm | cm | mm | 40 kts |
| LR 3 | 1500 | 3 | 14 | 30 | 90 |
| LR 4 | 2500 | 4 | 17 | 40 | 150 |
| LR 5 | 3000 | 5 | 20 | 60 | 180 |

TECHNICAL SHEET

- Adjustable Dyneema[®] loop
- ✓ 100% pre-stretched Dyneema[®] SK78 12 plaits, enzymé → Light grey / black
- ✓ Block[®] ring, flexible TPE thermoplastic

Universal low friction rings

- Static use
- ✓ Fr - Open low friction ring in self-lubricating technical resin → black
- ✓ internal diameter 14mm or 20mm
- Dynamic use
- ✓ FrD -: Low friction ring in hard anodized aluminium → anthracite grey
- ✓ internal diameter 14mm or 20mm



USE

- Adjustable Dyneema[®] loop is the ideal textile accessory for quickly connecting a low-friction ring without splicing.
- Allows you to create halyard or sheet leads
- A universal Dyneema[®] textile connector for low-friction rings that easily replaces a block
- For quick and easy attachment between two components: mainsail foot, windlass, barber-hauler, furler, in-hauler, etc.
- Withstands heavy loads

Information sail@nodusfactory.com

NODUS
FACTORY

MADE IN FRANCE

www.nodusfactory.com



Scan me !

LR[®] - Loop and Ring « Loop Dyneema[®] ajustable »

« Adjustable Dyneema[®] connector ajustable for low-friction ring »



LR[®] is an adjustable loop in Dyneema[®] SK78 to connect with a low-friction ring.

➤ This adjustable Dyneema[®] textile connector for low-friction rings can be used to create halyard or sheet leads.

Attaches quickly and easily to chainplates and jib tracks with a simple lark's head knot.

Advantages

- Easy to install → Fixing → Lark's head knot
- 360° rotation
- Excellent strength to weight ratio
- Reliable and maintenance-free

Accessories " Low friction rings

- Static use
- ✓ Fr - Low-friction open ring in self-lubricating technical resin → black
- Dynamic use
- ✓ FrD -: Low friction ring in hard anodized Duralumin → anthracite grey

References

| | |
|---------|-------|
| Loop R3 | 20217 |
| Loop R4 | 20214 |
| Loop R5 | 20215 |



NODUS
FACTORY
MADE IN FRANCE

Parc d'Activités de Laroiseau • 5 rue Ella Maillart • F- 56000 Vannes
Tél : +33 (0)2 97 67 64 83 • Mail : sail@nodusfactory.com www.nodusfactory.com



Blocker-roller® - Textile adjustment

"Textile blocker for 3D sheet adjustment"



| Product Name | Operating load | Wind force | | Accessory | Dimension cm | |
|---------------------------------|----------------|------------|--------|-------------|--------------|------|
| | | kg | 25 kts | | Mini | Maxi |
| Blocker-Roller 3 - FRD10 | 750 | 4/8 mm | 50 m2 | Ring FRD 10 | 12 | 45 |
| Blocker-Roller 4 - FRD14 | 900 | 6/10 mm | 70 m2 | Ring FRD 14 | 15 | 55 |
| Blocker-Roller 5 - FRD20 | 2500 | 10/14 mm | 100 m2 | Ring FRD 20 | 18 | 65 |
| Blocker-Roller 4 | 400 | 6/10 mm | | Option | 15 | 55 |
| Blocker-Roller 5 | 1200 | 10/14 mm | | Option | 18 | 65 |

TECHNICAL SHEET

Blocker-Roller® - Adjustable, self-locking textile rope clamp

- ✓ Mixed hollow braid in Dyneema® and PES "HD" 12 plaits, coated and sewn
- ✓ Adjustable buckles with Dyneema® sheath 48 plaits
- ✓ Nodus Factory "Bosco knot" textile shackle connector

Hard anodized aluminium FRD rings or optional Hook-friction accessory.

USE

- 1-Connect the Blocker-Roller to your deck using our "Bosco" textile shackle.
- 2- Adjust the power of your genoa:

- ✓ By increasing the length of the Blocker-Roller boom, you raise the clew, which opens the sail and the power comes out the top.
- ✓ Decreasing the length of the Blocker-Roller boom closes the leech, increasing power and heel.

Information sail@nodusfactory.com

NODUS
FACTORY

MADE IN FRANCE

www.nodusfactory.com



Scan me !

Blocker-roller® - Textile adjustment

"Textile blocker for 3D sheet adjustment"



The Nodus Factory™ textile cleat is an adjustable, self-locking Dyneema® braided cleat fitted with a low-friction ring or an open Hook-type ring. It allows you to adjust the height of the clew on the genoa or headsails like a roller on a clew track.

➤ Very light and very strong, it's easy to use and easy to install.

Uses

- The principle is simple: when the tension of your clew increases, the blocking of the Blocker-Roller boom increases.
- Then adjust the length of the boom using the pull loops, the low loop to raise the clew and the high loop to lower the clew.

Advantages

- Multi-purpose textile "wedge cleat" mobile rope clamp
- Easy to adjust the height of the pull point
- Quick and easy to install on rail, trigger guard, chainplate, etc., depending on your deck layout
- Optimized ergonomics, no protruding or aggressive parts
- Improves your deck layout

References

| | | |
|-----------------------|------------------------|-------|
| Blocker-Roller FRD10 | textile blocker & ring | 20225 |
| Blocker-Roller FRD14 | textile blocker & ring | 20226 |
| Blocker-Roller FRD20 | textile blocker & ring | 20227 |
| Blocker-Roller Hook14 | textile blocker & ring | 20228 |
| Blocker-Roller Hook20 | textile blocker & Hook | 20229 |

NODUS
FACTORY
MADE IN FRANCE

Parc d'Activités de Laroiseau • 5 rue Ella Maillart • F- 56000 Vannes
Tél : +33 (0)2 97 67 64 83 • Mail : sail@nodusfactory.com www.nodusfactory.com



Sail-Fuse® - Mainsail shock absorber

« Patented FR2105794 »



| Product Name | Length | Fuse breaking load | Breaking load | Roll out length | Boat size |
|--------------|--------|--------------------|---------------|-----------------|-----------|
| Damper | mm | kg | kg | mm | ml |
| Sail-Fuse 6 | 180 | 600 | 1 600 | 900 | 6 / 8 |
| Sail-Fuse 12 | 200 | 1 200 | 2 500 | 1 100 | 8 / 11 |
| Sail-Fuse 18 | 250 | 1 800 | 3 600 | 1 350 | 11 / 14 |

TECHNICAL SHEET

- ❑ 100% Dyneema® webbing
- ✓ 32 plaits pre-stretched, coated - Black
- ✓ HDPE polypropylene sheath

Nodusfactory™ "Sail-fuse®" textile mainsail shock absorbers are made in France and crafted in our workshop by our expert fitters.



Sail-Fuse 6 de 180 mm / 900 mm

Sail-Fuse 12 de 200 mm / 1100 mm

Sail-Fuse 18 de 250 mm / 1350 mm

USE

- ❑ Sail-Fuse, used to connect two components that are subjected to opposing forces during use.
- ❑ Energy-absorbing textile connector to be fixed between the boom and the mainsail tackle.
- ❑ This device is not a substitute for setting "the sail of time", as there is no such thing as zero risk.

Information sail@nodusfactory.com

NODUS
FACTORY

MADE IN FRANCE

www.nodusfactory.com



Scan me !

Sail-Fuse® - Mainsail shock absorber

« Patented FR2105794 »



The **Sail-fuse®** Nodus Factory™ textile damper is a load fuse and mainsail damper.

➤ The "Sail-fuse®" fuse opens when the "Rupture" intervention load of the damper is exceeded, several models available.

Made from Dyneema® textile webbing with energy absorber in the event of a spontaneous gybe.

Applications

- Sail-Fuse, used to connect two components that are subjected to opposing forces during use.
- Energy-absorbing textile connector to be fixed between the boom and the mainsail tackle.
- This device is not a substitute for establishing "the sail of time", as there is no such thing as zero risk.

Advantages

- Avoid damage to props and stays, which can lead to structural failure of the equipment.
- Passive safety - load transfer
- Weight/strength ratio

References

| | |
|--------------|-------|
| Sail-Fuse 6 | 20201 |
| Sail-Fuse 12 | 20202 |
| Sail-Fuse 18 | 20203 |

NODUS
FACTORY
MADE IN FRANCE

Parc d'Activités de Laroiseau • 5 rue Ella Maillart • F- 56000 Vannes
Tél : +33 (0)2 97 67 64 83 • Mail : sail@nodusfactory.com www.nodusfactory.com



Friction ring & Nub



Which friction ring for which use?

Each friction ring has a specific use, and it is important to check its characteristics to use it properly...!

➤ See our comparison table



Low-friction rings can easily be fitted to your boat to replace an old block.

Combined with a textile connector: shackle, loop, erse in textile Dyneema® and our locking systems (Twist Lock / Block® Ring), Nodusfactory™ friction rings will provide you with strength, lightness and performance to equip and rig your sailboat.



Nodus Factory Fittings & Tips

Follow the basic rules of seamanship to ensure maximum load on low-friction rings.



✓ A larger eye increases the strength of the ring, the angle of the splice to the groove should be at least 15 degrees.



✓ The length of the flat eye should be at least 2.7 times the diameter of the ring groove.



FR 10 = 27 mm / FR 14 = 38 mm / FR 20 = 54 mm / FR 28 = 76 mm



✓ The textile connector for the ring must be at least 0.6 times the diameter of the groove (loop, shackle, lashing, strop, etc.) The Ø of the sheet or halyard must be at least :

FR 10 = 4 mm / FR 14 = 6 mm / FR 20 = 10 mm

Which friction ring for which use?

Friction rings, or to use the correct terminology, 'low friction rings', will easily find their place on your boat as a replacement for a block (asymmetric spinnaker tack, reefing, cascade, mast foot blocks, etc.).

Combined with our textile connectors: shackle, loop, Dyneema® erse and our locking systems (Twist Lock® / Block® Ring), NodusFactory™ friction rings will provide you with strength, lightness and performance to equip and rig your sailboat.

Made from different materials depending on their intended use, our material comparison will help you choose your ideal low friction ring.

| Material | Lifespan | Friction | T° usage | T° Celsius | Dynamic | Static | Material price |
|-----------|----------|----------|----------|---------------|---------|--------|----------------|
| ITECH | 5/5 | 5/5 | 4/5 | + 140° / 180° | 5/5 | 4/5 | 5/5 |
| ALUMINIUM | 4/5 | 4/5 | 5/5 | + 180° / 240° | 4/5 | 5/5 | 4/5 |
| PEEK | 4/5 | 3/5 | 4/5 | + 140° / 180° | 4/5 | 5/5 | 3/5 |
| POM | 3/5 | 4/5 | 2/5 | 100° | 3/5 | 3/5 | 2/5 |
| PA66 | 4/5 | 3/5 | 3/5 | 120° | 3/5 | 3/5 | 2/5 |

If you're looking for the No. 1 low-friction ring that performs as well as a basic pulley, the iTech range is for you:

Longer lifespan than metal

- +/- 6900 hours continuous friction
- +/- 200,000 halyard sends, tacking, sail trimming,
- 80% lighter than metal

Friction ring P-Tech® - Low friction ring

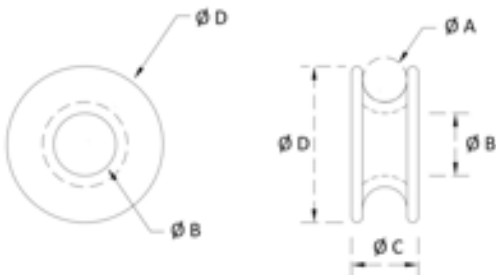
« Technical polymer P-Tech® Low / High »



| Product Name | Breaking load | | | Weight | Dimensions | | | | recommended Ø | Sail area M2 |
|---------------------|-----------------|------|------|--------|------------|----|----|----|---------------|--------------|
| | Kg - load angle | | | | A | B | C | D | | |
| Polymer | | | | gramme | | | | | Sheet | 40 kts |
| Low friction | 180° | 90° | 60° | | mm | | | | mm | Angle 90° |
| P-Tech 10 | 900 | 1250 | 1800 | 2 | 7 | 10 | 12 | 24 | 4/6 | 25 |
| P-Tech 14 | 1200 | 1700 | 2400 | 4 | 10 | 14 | 16 | 34 | 6/8 | 40 |
| P-Tech 20 | 1600 | 2250 | 3200 | 16 | 14 | 20 | 22 | 49 | 8/14 | 62 |

TECHNICAL SHEET

- P-Tech®, low friction ring in self-lubricating resin / black
- Low Friction → Polymer tech / Thermoplastic POM
- High friction → Tech polymer / PEEK stable thermoplastic



USE

- Dynamic and static use
- 3D headsail adjustment
- Double sheets
- Deck plates & tackle
- ... just about everything, depending on the required loads!

Information sail@nodusfactory.com

NØDUS
FACTORY
 MADE IN FRANCE
www.nodusfactory.com



Scan me !

Friction ring P-Tech® - Low friction ring

« technical polymer P-Tech® Low / High »



P-Tech®, Nodus Factory® rings are self-lubricating, very light, reliable and highly resistant to friction for dynamic use in high Friction.

- They can be used in a wide range of applications with all types of non-abrasive ropes:
- ✓ Static at low speed
- ✓ Dynamic at high speed

Essential on board your yacht with our textile connectors "Loops, Lock®,..." to optimise your deck layout for greater safety and performance.

Advantages

Very low coefficient of friction

- ❑ Dynamic use, very high friction speed - T°C continuous use T °C +140 /180
- ✓ High friction P-tech coefficient of friction 0.40 compared to aluminium 1.35
- ❑ Static use low friction speed - T°C continuous use T °C +80 /100
- ✓ Low friction coefficient P-tech 0.25 compared to aluminium 1.35

References

| | |
|-------------|-------|
| P-Tech 10 L | 20109 |
| P-Tech 14 L | 20110 |
| P-Tech 20 L | 20111 |
| | |
| P-Tech 10 H | 20112 |
| P-Tech 14 H | 20113 |
| P-Tech 20 H | 20114 |

Nodus Tips

| Material | Durability / Wear | Friction | T° use | T° Celsius | Dynamic | Static | Material price |
|-----------|-------------------|----------|--------|---------------|---------|--------|----------------|
| ITECH | 5/5 | 5/5 | 4/5 | + 140° / 180° | 5/5 | 4/5 | 5/5 |
| ALUMINIUM | 4/5 | 4/5 | 5/5 | + 180° / 240° | 4/5 | 5/5 | 4/5 |
| PEEK | 4/5 | 3/5 | 4/5 | + 140° / 180° | 4/5 | 5/5 | 3/5 |
| POM | 3/5 | 4/5 | 2/5 | 100° | 3/5 | 3/5 | 2/5 |

NODUS
FACTORY
MADE IN FRANCE

Parc d'Activités de Laroiseau • 5 rue Ella Maillart • F- 56000 Vannes
Tél : +33 (0)2 97 67 64 83 • Mail : sail@nodusfactory.com www.nodusfactory.com



Friction ring I-Tech® - Low friction ring

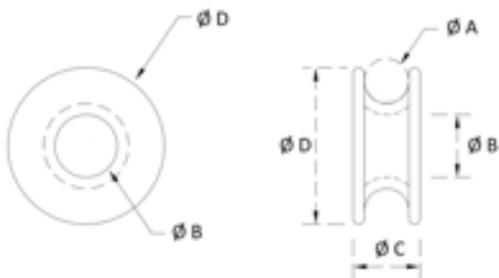
« Low friction ring polymer I-Tech® »



| Product Name | Breaking load | | | Weight | Dimensions | | | | Ø Recommended | Sail area M2 |
|----------------------|-----------------|------|------|--------|------------|----|----|----|---------------|--------------|
| | Kg - load angle | | | | A | B | C | D | | |
| Polymer | Kg - load angle | | | gramme | A | B | C | D | Sheet | 40 kts |
| High friction | 180° | 90° | 60° | | mm | | | | mm | Angle 90° |
| I-Tech 7 | 400 | 600 | 800 | 1 | 5 | 6 | 10 | 18 | 2/4 | 10 |
| I-Tech 10 | 1000 | 1500 | 2000 | 2 | 7 | 9 | 12 | 24 | 4/6 | 25 |
| I-Tech 14 | 1500 | 2200 | 3000 | 4 | 9 | 13 | 15 | 34 | 6/8 | 40 |

TECHNICAL SHEET

- I-Tech, low friction ring in lubricating polymer
- ✓ Low Friction → I-Tech self-lubricating technical plastic resin → Ivory / Black tinted
- ✓ 3 components / Base polymer, fibers and solid lubricant filling.



USE

- Dynamic use
- ✓ 3D headsail adjustment
- ✓ Double sheets
- ✓ Deck plates & Hoist
- ✓ ... just about everything, depending on the load requirements

Information sail@nodusfactory.com

NØDUS
FACTORY

MADE IN FRANCE

www.nodusfactory.com



Scan me !

Friction ring I-Tech® - Low friction ring

« Low friction ring polymer I-Tech® »



I-Tech®, Nodus Factory™ rings are self-lubricating, very light, reliable and highly resistant to friction for dynamic use.

- They can be used in a wide range of dynamic applications with all types of rope.

Essential on board your yacht with our textile connectors "Loops, Lock®,..." to optimise your deck layout for greater safety and performance.

- They can be used just about anywhere and with any type of rope.

Advantages

- ❑ Very low coefficient of friction
- ✓ Dynamic use, very high friction speed T°C continuous use T °C +140 /180
- ✓ Coefficient of friction of PO Itech 0.18 compared with aluminium 1.35

References

| | |
|-----------|--------|
| I-Tech 7 | 20203B |
| I-Tech 10 | 20204B |
| I-Tech 14 | 20205B |

Nodus Tips

| Material | Durability / Wear | Friction | T° use | T° Celsius | Dynamic | Statique | Material price |
|-----------|-------------------|----------|--------|---------------|---------|----------|----------------|
| ITECH | 5/5 | 5/5 | 4/5 | + 140° / 180° | 5/5 | 4/5 | 5/5 |
| ALUMINIUM | 4/5 | 4/5 | 5/5 | + 180° / 240° | 4/5 | 5/5 | 4/5 |
| PEEK | 4/5 | 3/5 | 4/5 | + 140° / 180° | 4/5 | 5/5 | 3/5 |
| POM | 3/5 | 4/5 | 2/5 | 100° | 3/5 | 3/5 | 2/5 |

NODUS
FACTORY
MADE IN FRANCE

Parc d'Activités de Laroiseau • 5 rue Ella Maillart • F- 56000 Vannes
Tél : +33 (0)2 97 67 64 83 • Mail : sail@nodusfactory.com www.nodusfactory.com



Friction Ring FrD[®] - Low friction ring

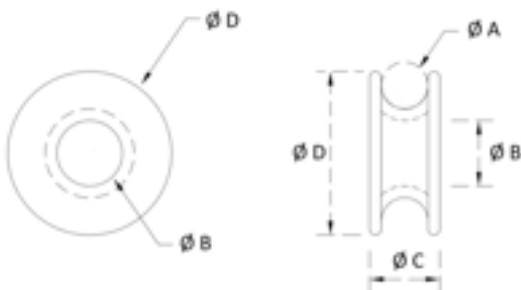
« Duralumin[®] »



| Product Name | Breaking load | | | Weight | Dimensions | | | | recommended Ø | |
|------------------|---------------|-----------------|------|--------|------------|----|----|----|---------------|-------|
| | Angle | Kg - load angle | | | gram | A | B | C | | D |
| Duralumin | | 180° | 90° | 60° | | | | | | |
| FrD 10 | | 500 | 950 | 1000 | 8 | 8 | 12 | 12 | 30 | 4/8 |
| FrD 14 | | 650 | 1100 | 1300 | 16 | 10 | 16 | 16 | 40 | 6/10 |
| FrD 25 | | 1700 | 3100 | 3400 | 60 | 16 | 24 | 17 | 60 | 12/18 |

TECHNICAL SHEET

- FrD Low friction Duralumin ring
- ✓ Hard anodizing treatment
- ✓ Friction resistance with a good sliding coefficient under high load
- ✓ Improved rigidity
- ✓ Corrosion resistance (to nickel salt clogging, approx. 300 hours)
- ✓ The hard oxide layer is 50% thicker and 50% embedded in the metal
- Anthracite grey color, orange marking



USE

- High load in Dynamic Use
- ✓ 3D headsail adjustment
- ✓ Backstay
- ✓ Downhaul
- ✓ Double sheets
- ✓ Deck plates & tackle
- ✓ ... just about everything!

Follow the basic rules of seamanship to ensure maximum load on low-friction rings.
A larger eye increases the strength of the ring, and the angle of the splice to the groove should be at least 15 degrees.

Information sail@nodusfactory.com

NØDUS
FACTORY

MADE IN FRANCE

www.nodusfactory.com



Scan me !

Friction Ring FrD[©] - Friction ring

« Duralumin® »



Nodus Factory™ low-friction Duralumin rings are lightweight, reliable and durable. Essential on board your yacht with our textile connectors "Loops, Lock,..." to be able to optimize your deck plan for greater safety and performance.

They are suitable for creating hoists and stunts of all types:

- ✓ Boom downhaul
- ✓ Backstay
- ✓ Genoa trimmers
- ✓ reefing lines

They can be used for just about anything and with any type of rope, although some Technora® ropes have an aggressive grip.

Advantages

- ☐ High mechanical strength
- ☐ Low coefficient of friction

References

| | |
|--------|-------|
| FrD 10 | 20115 |
| FrD 14 | 20116 |
| FrD 20 | 20117 |

Nodus Tips

The angle of the splice: the groove must be at least 15 degrees.

The length of the flat eye must be at least 2.7 times the diameter of the ring groove.

✓ FR 10 = 27 mm / FR 14 = 38 mm / FR 20 = 54 mm / FR 28 = 76 mm

The textile connector for the ring must be at least 0.6 times the diameter of the groove (loop, shackle, lashing, strop, etc.) The Ø of the sheet or halyard must be at least :

✓ FR 10 = 4 mm / FR 14 = 6 mm / FR 20 = 10 mm

NODUS
FACTORY
MADE IN FRANCE

Parc d'Activités de Laroiseau • 5 rue Ella Maillart • F- 56000 Vannes
Tél : +33 (0)2 97 67 64 83 • Mail : sail@nodusfactory.com www.nodusfactory.com



Block-Friction® FrD - Violin ring pulley

« Violin ring - Dyneema® & Duralumin® »

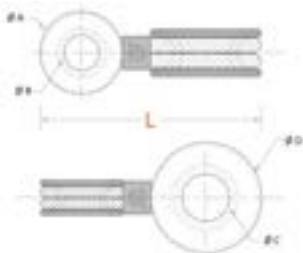


| Product Name | Breaking load | Length | Inside Ø | recommended Ø | Sail area |
|-----------------|---------------|----------|----------|-----------------|-----------|
| | Direct | Straight | Rings | Halyard / sheet | 40 kts |
| | kg | cm | mm | mm | M2 ≥ 180° |
| BF 14-10 | 1600/800 | 7 | 14/10 | 8/6 | 55 |
| BF 20-14 | 5000/3600 | 13 | 25/20 | 14/10 | 100 |

TECHNICAL SHEET

- ❑ FRD low-friction ring, in hard anodized Duralumin
→ anthracite grey
- ✓ FrD10/FrD14 & FrD14/FrD20
- ❑ Textile® crimp between rings, 100% Dyneema®
core and sheath
- ✓ SK78 12 plaits pre-stretched, coated → Light
grey / black
- ❑ Block® ring, in flexible TPE thermoplastic

- ❑ FRD ring
- ✓ Friction resistant with a good sliding coefficient
under high load
- ✓ Improved rigidity
- ✓ Anthracite grey colour, orange marking



USE

- ❑ High load in static & dynamic use
- ✓ Under beard
- ✓ 3D headsail adjustment
- ✓ Backstay
- ✓ Downhaul
- ✓ Double sheets
- ✓ Deck plates & tackle
- ✓ ... just about everything!

The textile connection allows the load to self-align, reducing fatigue.

Information sail@nodusfactory.com

NØDUS
FACTORY

MADE IN FRANCE

www.nodusfactory.com



Scan me !

Block-Friction® FrD - Violin ring pulley

« Violin ring - Dyneema® & Duralumin® »



BF®, the Block-Friction® violin ring has an exceptional strength-to-weight ratio (10 times lighter than a pulley), designed for high static loads.

- Block Friction® rings can be used for 3:1 or 4:1 downhaul or mainsail hoists, as well as for cunningham adjustment hoists or sheet point hoists on larger boats.
- Our Violin rings are ideal for applications requiring low rope movement (speed) and a low angle (the greater the deflection, the greater the friction).
- They can be used for just about anything and with any type of rope, although some Technora® ropes have an aggressive grip.

Advantages

- ✓ High mechanical strength
- ✓ Low coefficient of friction
- ✓ Alignment of loads by textile crimping between rings
- ✓ Reliable and maintenance-free " No mechanical parts ".

References

| | |
|----------|-------|
| BF 14-10 | 20273 |
| BF 20-14 | 20274 |

Nodus Tips

Nodusfactory™ FRD rings have a higher workload compared to an equivalent pulley size and are easy to configure and install.

NODUS
FACTORY
MADE IN FRANCE

Parc d'Activités de Laroiseau • 5 rue Ella Maillart • F- 56000 Vannes
Tél : +33 (0)2 97 67 64 83 • Mail : sail@nodusfactory.com www.nodusfactory.com



Mickey-Ring® FrD - 3D violin pulley

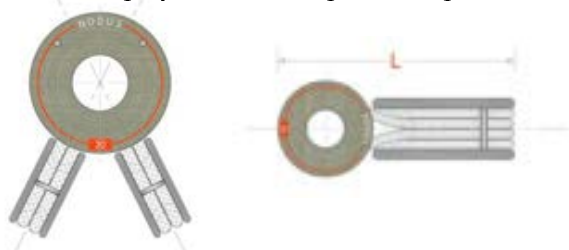
« 3D violon ring adjustment - Dyneema® & Duralumin® »



| Product Name | Breaking load | Ø Inside | recommended Ø | Sail area |
|-------------------|---------------|---------------|---------------|-----------|
| | Direct | Friction ring | Halyard/sheet | 40 kts |
| | kg | mm | mm | M2 ≥ 180° |
| BF M 14-10 | 1600/800 | 14/10 | 8/6 | 55 |
| BF M 20-14 | 5000/3200 | 25/14 | 14/10 | 100 |

TECHNICAL SHEET

- FRD low-friction ring, in hardened anodized Duralumin → anthracite grey
 - ✓ FrD10/FrD14
 - ✓ FrD14/FrD20
- Textile® crimp between rings, core and sheath in 100% Dyneema® ®.
- ✓ SK78 12 plaits pre-stretched, coated → Light grey / black
- Block® ring, in flexible TPE thermoplastic
- FRD ring
 - ✓ Friction resistant with a good sliding coefficient under high load
 - ✓ Improved rigidity
 - ✓ Corrosion resistance
 - ✓ Anthracite grey colour, orange marking



USE

- High load in static & dynamic use
 - ✓ Under beard
 - ✓ 3D headsail adjustment
 - ✓ Downhaul
 - ✓ Double sheets
 - ✓ Deck plates & Hoist
 - ✓ ... just about everything!
- The textile connection allows the load to self-align, reducing fatigue on rings and ropes.

Information sail@nodusfactory.com

NODUS
FACTORY

MADE IN FRANCE

www.nodusfactory.com



Scan me !

Mickey-Ring® FrD - 3D violin pulley

« 3D violon ring adjustment - Dyneema® & Duralumin® »



BF-M®, the 3D Mickey-ring violin block is a set of 3 connection points, ideal for efficiently adjusting your 3D genoa draft point.

- Lightweight and compact, the multiaxial 3D violin block allows perfect alignment of the connections at different angles. Each friction ring is adjustable and mobile (10 times lighter than a pulley), designed for heavy loads.
- Easy to configure, this 3D multiaxial system with friction rings rotating up to 180° will produce minimum friction and wear on your ropes.
- They can be used for just about anything and with any type of rope, although beware that some Technora® ropes have an aggressive grip.

Advantages

- High mechanical strength
- Low coefficient of friction
- Load alignment
- Large deflection angles

References

| | |
|------------|-------|
| BF-M 14-10 | |
| BF-M 20-14 | 20245 |

Nodus Tips

Nodus Factory FRD rings have a higher workload compared to an equivalent pulley size and are easy to configure and install.

NODUS
FACTORY
MADE IN FRANCE

Parc d'Activités de Laroiseau • 5 rue Ella Maillart • F- 56000 Vannes
Tél : +33 (0)2 97 67 64 83 • Mail : sail@nodusfactory.com www.nodusfactory.com



Nub® pulley - Low friction pulley

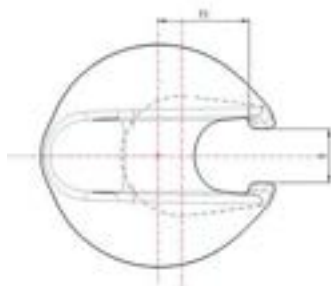
« High-load, multi-use, low-friction pulley »



| Product name | Breaking Load | Weight | NUB Ø | Recommended rope Ø |
|-------------------|---------------|--------|-------|--------------------|
| | kg | gr | mm | mm |
| NUB® 40 HF | 4700 | 26 | 40 | 8/10 |

TECHNICAL SHEET

- Nub® low friction pulley
- ✓ Technical polymer - Semi-crystalline thermoplastic
- ✓ Twice as light as aluminium and six times lighter than steel
- ✓ Friction resistance with a good sliding coefficient under high load
- ✓ Good chemical, mechanical and thermal resistance



USE

- High load in Dynamic Use
- ✓ 3D headsail adjustment
- ✓ Backstay
- ✓ Downhaul
- ✓ Double sheets
- ✓ Deck plates & tackle
- ✓ ... just about everything!
- Combine the Nub® with our textile connectors:
 - ✓ M or Ms shackle
 - ✓ Loop or Lock®

Information sail@nodusfactory.com

NODUS
FACTORY

MADE IN FRANCE

www.nodusfactory.com



Scan me !

Nub© pulley - Low friction pulley

« High-load, multi-use, low-friction pulley»



The Nub© is a low-friction spherical pulley that withstands very high loads.

- ✓ Thanks to its intrinsic lubrication, it can be used in a wide range of applications and on all types of non-aggressive rope.
- ✓ Use our textile connectors to create your own pulley

Advantages

- ☐ High mechanical strength
- ☐ Low coefficient of friction

References

| | |
|--------|-------|
| Nub 40 | 20122 |
|--------|-------|

Nodus Tips

- Choose the R-Nub© - Nub© reefing shackle for spinnaker sheets, as it is captive on the sheet and spinnaker arm.

NODUS
FACTORY
MADE IN FRANCE

Parc d'Activités de Laroiseau • 5 rue Ella Maillart • F- 56000 Vannes
Tél : +33 (0)2 97 67 64 83 • Mail : sail@nodusfactory.com www.nodusfactory.com



Spi 4Nub© - Spinnaker pulley on lashing strap

« Low-friction bushing pulley for high loads »



| Product name | Breaking Load | Weight | Length | Sail area |
|-------------------|---------------|--------|----------|-----------|
| | | | Straight | 40 kts |
| | kg | gr | max cm | m2 |
| Spi 4 Nub® | 3500 | 66 | 50 | 130 |

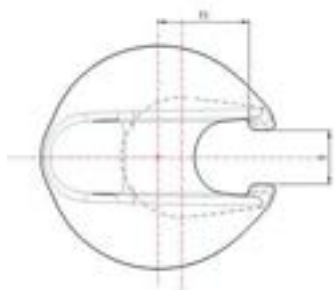
To be used for bowsprit :

| Bowsprit | Ø 70 mm | Ø 80 mm | Ø 90 mm** | Ø 100 mm** |
|---------------|---------------|---------------|---------------|---------------|
| Spi | 60 m2 | 80 m2 | 100 m2 | 130 m2 |
| Gennaker | 37 m2 | 50 m2 | 65 m2 | 105 m2 |
| Jib reefing * | 1,5 t / 2,5 t | 2,5 t / 4,5 t | 4,5 t / 7,0 t | 4,5 t / 7,0 t |

* With jib-boom **Loop with lashing & Ring FrD

TECHNICAL SHEET

- Sewn webbing 100% Dyneema® SK78 48 plaits pre-stretched, coated → black
- Structural eye termination → sewn
- Lashing in Dyneema® SK78 - 12 plaits
- Low friction Nub® pulley → Self-lubricated technical polymer resin → black



USE

- Spinnaker pulley for bowsprit with lashing strap attachment
- Tack position can be adjusted using the Nodus FR14 friction ring
- Adjustable strap length with Dyneema® lashing, fastened with a minimum of 4 half-hitch.

Information sail@nodusfactory.com

NODUS
FACTORY

MADE IN FRANCE

www.nodusfactory.com



Scan me !

Spi 4Nub© - Spinnaker pulley on lashing strap

« Low-friction bushing pulley for high loads »



The Spi 4Nub® is a Nub® pulley on a tie strap for attaching the spinnaker tack to the bowsprit.

✓ Adjustable attachment with lashing supplied in Dyneema®.

Advantages

- Easy to install, no mechanical fixings required " Anti-slip strip fitting optional
- Secure locking under and without load
- High mechanical strength
- Low coefficient of friction

References

| | |
|----------|-------|
| Spi 4Nub | 20122 |
|----------|-------|

Nodus Tips

- Choose the R-Nub® shackle - Nub® reefing shackle, when reefing the spinnaker sheet as it is captive on the sheet and spinnaker arm..

NODUS
FACTORY
MADE IN FRANCE

Parc d'Activités de Laroiseau • 5 rue Ella Maillart • F- 56000 Vannes
Tél : +33 (0)2 97 67 64 83 • Mail : sail@nodusfactory.com www.nodusfactory.com



Pulleys & Snatch blocks



Pulleys & Nub®

Discover our I-Tech® ball pulleys and our Nodus Factory™ Nub® friction pulleys.



Key elements for boating, pulleys and rings make it possible to transmit forces, direct ropes, guide, or create tackles, essential accessories for rigging and adjusting sails.

Pulleys have evolved in recent years towards a new method of fixing that is more efficient than the stainless steel swivel shackle: lashing and the Dyneema® textile shackle.



Among the advantages of textile-fixed pulleys, we note that the forces pass directly through the center of the pulley “the sheave”, which improves its resistance and reduces the risk of breakage.

Advantages of textile-mounted pulleys:

1. Versatility of use thanks to its flexible fixing method
2. In the event of sheave breakage, the load is maintained by the lashing or textile shackle.
3. Pulley shape and design requires fewer parts
4. Lighter and stronger
5. No corrosion and no maintenance
6. Automatic load alignment



Nodus Factory hardware & Tips

Check that the lashing or textile shackle is attached to a trigger guard or chainplate whose edges are rounded.



Ball pulleys or textile hook friction!

- High performance, easy to use, lightweight designed for heavy loads.

A 4.0 fittings as a solution for controlling and returning a sheet under tension, which allows you to quickly pass a “Hooked” line in any situation: a genoa sheet, a spinnaker, etc.

The ideal solution for your barbers and in-haulers or as a replacement flying pulley on your sailboat.

They can be attached anywhere on the deck, and another advantage is that the Nodus Factory Hook® sntach block can be opened with just one hand.

Opening and closing our low-friction “Hook®” carabiner type opening pulleys prevents the rope from coming out, the action is done quickly and securely thanks to the Velcro® strap.

Made of POM or I Tech® Polymer and hardened anodized aluminum and supplied with our Dyneema® textile connectors (TH-C spliced textile shackle or TH-M spliced textile shackle).

Nodus Factory hardware & Tips

- The Nodus Factory Hook® is a versatile product for hooking everywhere: tack, mast base, barber etc.

Pulley Hi-Tech® - Ball-bearing pulley

« Sustainable, ultra-light Hi-Tech pulley »



| Product Name | Breaking load | weight | Length | rope Ø |
|----------------|---------------|--------|--------|---------------|
| | Direct | | L | Halyard/sheet |
| PA Tech | kg | gr | cm | mm |
| P 20 | 400 | 2 | 4 | 4/6 |
| P 30 | 500 | 4 | 5 | 6/8 |
| P 40 | 700 | 7 | 5 | 8/10 |

TECHNICAL SHEET

High-strength, ultra-light Hi-tech pulley

- ✓ Composite pulley body
- ✓ Moulded HD Polymer flanges
- ✓ I-Tech & PA 6.6 composite sheave
- ✓ Dynamic ball bearing
- ✓ Double row of 316 stainless steel balls
- Dyneema® textile connector
- ✓ SK78 12 plaits, coated and pre-stretched
- T-close® connector → Pa Tech glass-fiber filled



USE

The Hi-tech® Nodus pulley allows you to multiply forces and redirect a manoeuvre, a halyard or a sheet, or move a load in a different direction.

- Returns, hoist, barber, cascade, etc.

Designed to support two types of load :

- ✓ static load
- ✓ dynamic load

Information sail@nodusfactory.com

NODUS
FACTORY

MADE IN FRANCE

www.nodusfactory.com



Scan me !

Pulley Hi-Tech® - Ball-bearing pulley

« Sustainable, ultra-light Hi-Tech pulley »



Hi-Tech P® pulleys, High-strength, ultra-light, Hi-tech single-transfer pulleys. Compact in shape, they are designed for high working loads.

Loads are carried directly from the sheaves to the attachment point, using lightweight side plates. Designed primarily for racing, they can be used in almost any situation...

➤ Attached by shackle, loop or lashing in Dyneema® ©.

Our pulleys are among the toughest on the market!

Advantages

- Weight-to-strength ratio
- Performance, lightness and reliability
- Low coefficient of friction
- Load alignment via textile connector

References

| | |
|-------------------|-------|
| Poulie Hi-Tech 20 | 20364 |
| Poulie Hi-Tech 30 | 20365 |
| Poulie Hi-Tech 40 | 20366 |

Nodus Tips

- Accessorize your Hi-Tech Nodus pulleys with our Dyneema® hooks and connectors.
- ✓ Loop
- ✓ T shackle

NODUS
FACTORY
MADE IN FRANCE

Parc d'Activités de Laroiseau • 5 rue Ella Maillart • F- 56000 Vannes
Tél : +33 (0)2 97 67 64 83 • Mail : sail@nodusfactory.com www.nodusfactory.com



Double pulley Hi-Tech®

Heavy-duty, ultra-light double Hi-Tech pulley



| Product Name | Breaking Load | Weight | Length under pulley | Recommended rope Ø |
|----------------|---------------|--------|---------------------|--------------------|
| Double pulley | Direct | | L | Rope |
| PA Tech | kg | gr | cm | mm |
| P 20.2 | 600 | 5 | 5 | 4 |
| P 30.2 | 750 | 9 | 8 | 6 |
| P 40.2 | 900 | 15 | 11 | 8 |

TECHNICAL SHEET

High-strength, ultra-light double Hi-tech pulley

- ✓ Composite pulley body
- ✓ Moulded HD Polymer flanges
- ✓ I-Tech & PA 6.6 composite sheave
- ✓ Dynamic ball bearing
- ✓ Double row of 316 stainless steel balls

Dyneema® textile connector

- ✓ DSK78 12 plaits, coated, pre-stretched
- ✓ T-close® connector → Pa Tech glass-fiber reinforced

USE

The Hi-tech® Nodus double pulley allows you to multiply your efforts and redirect a manoeuvre, a halyard or a sheet, or move a load in a different direction.

- ☐ Returns, hoist, barber, cascade, etc.

Designed to support two types of load :

- ✓ static load
- ✓ dynamic load

Information sail@nodusfactory.com

NODUS
FACTORY

MADE IN FRANCE

www.nodusfactory.com



Scan me !

Double pulley Hi-Tech®

Heavy-duty, ultra-light double Hi-Tech pulley



Hi-Tech P2® Nodus® double pulley, High-strength and ultra-lightweight Hi-tech double pulley with transfer, compact design for high working loads.

Loads are carried directly from the sheaves to the attachment point, using lightweight side plates. Designed primarily for racing, they can be used in almost any situation...

Attached by shackle, loop or lashing in Dyneema®.

Our pulleys are among the toughest on the market!

Advantages

- Weight-to-strength ratio
- Performance, lightness and reliability
- Low coefficient of friction
- Load alignment via textile connector

References

| | |
|---------------------|-------|
| Poulie Hi-Tech 20.2 | 20240 |
| Poulie Hi-Tech 30.2 | 20241 |
| Poulie Hi-Tech 40.2 | 20242 |

Nodus Tips

- Accessorize your Hi-Tech® Nodus double pulleys with our Dyneema® hooks® and connectors.
- ✓ Loop
- ✓ T shackle

NODUS
FACTORY
MADE IN FRANCE

Parc d'Activités de Laroiseau • 5 rue Ella Maillart • F- 56000 Vannes
Tél : +33 (0)2 97 67 64 83 • Mail : sail@nodusfactory.com www.nodusfactory.com



Opening pulley Hi-Tech® - Dyneema® shackle

« Sustainable, ultra-light Hi-Tech opening pulley »



| Product Name | Breaking Load | Weight | Length under pulley | Recommended rope Ø | Sail area |
|----------------|---------------|--------|---------------------|--------------------|-----------|
| Connector | Direct | | L | Halyard/Sheet | 40 kts |
| PA Tech | kg | gr | cm | mm | M2 ≥45° |
| PO 20* | 400 | 2 | 5,5 | max 4 | 8 |
| PO 30* | 500 | 4 | 7 | max 6 | 12 |
| PO 40* | 700 | 7 | 7 | max 8 | 14 |

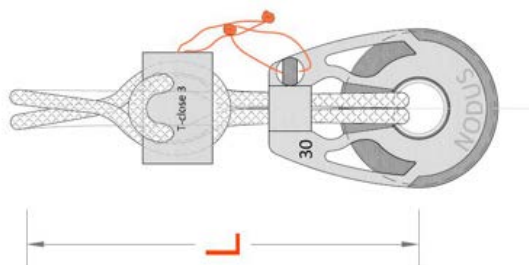
TECHNICAL

High-strength, ultra-light Hi-tech snatch block

- ✓ Composite pulley body
- ✓ Moulded swivel flanges in HD Polymer
- ✓ I-Tech & PA 6.6 composite sheave
- ✓ Dynamic ball bearing
- ✓ Double row of 316 stainless steel balls

Dyneema® textile connector

- ✓ DSK78 12 plaits, coated and pre-stretched
- ✓ T-close® connector - Pa Tech glass-fiber reinforced



USE

The Hi-tech® Nodus opening pulley :

- ✓ Controls and returns sheets under tension
- ✓ Allows a rope to be passed through quickly in any situation
- ✓ Allows you to redirect a manoeuvre, a halyard or a sheet, or move a load in a different direction.

Designed to withstand two types of load :

- ✓ static load
- ✓ dynamic load

Information : sail@nodusfactory.com

NODUS
FACTORY

MADE IN FRANCE

www.nodusfactory.com



Scan me !

Opening pulley Hi-Tech® - Dyneema® shackle®

« Sustainable, ultra-light Hi-Tech opening pulley »



PO® opening pulley, supplied with a Dyneema® T shackle.
Ultra-light and compact, they are designed for high working loads.
Loads are led directly from the sheaves to the attachment point, allowing light side swivel cheeks.
Designed primarily for racing, they can be used in almost any situation...

➤ Dyneema® © T shackle attachment

Our pulleys are among the toughest on the market!

Advantages

- Weight-to-strength ratio
- Performance, lightness and reliability
- Secure opening and closing
- Low coefficient of friction
- Textile connector aligns loads

References

| | |
|---------------------------|-------|
| Opening pulley Hi-Tech 20 | 20367 |
| Opening pulley Hi-Tech 30 | 20368 |
| Opening pulley Hi-Tech 40 | 20369 |

NODUS
FACTORY
MADE IN FRANCE

Parc d'Activités de Laroiseau • 5 rue Ella Maillart • F- 56000 Vannes
Tél : +33 (0)2 97 67 64 83 • Mail : sail@nodusfactory.com www.nodusfactory.com



Pp Hi-Tech® - Traveler Pulley

« Lightweight, resistant traveller pulley »

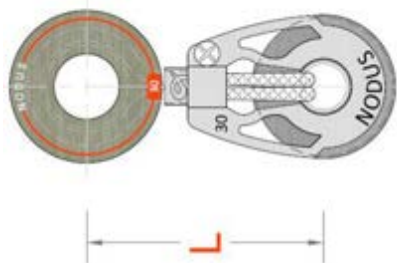


| Product Name | Breaking Load | Weight | Length L | Recommended rope Ø | | Sail area |
|--------------|---------------|--------|----------|--------------------|------|-----------|
| | | | | Pulley | Ring | |
| Connector | Direct | | | | | 40 kts |
| | kg | gr | cm | mm | mm | M2 ≥45° |
| PP 30 | 500 | 25 | 4,5 | 4/6 | 4/8 | 12 |
| PP 40 | 700 | 28 | 6,5 | 6/8 | 6/10 | 14 |

TECHNICAL SHEET

- Friction ring D – Hard anodized Duralumin ring
– Anthracite grey
- ✓ High-strength, ultra-light Hi-tech pulley
- ✓ Composite pulley body
- ✓ Moulded flanges in HD Polymer
- ✓ I-Tech & PA 6.6 composite sheave
- Dynamic ball bearing
- ✓ Double row of 316 stainless steel balls

- Dyneema® textile loop connector
- DSK78 12 plaits, coated and pre-stretched
- Block® ring, clamping and retaining ring, in flexible TPE thermoplastic.



USE

- The PP Hi-Tech pulley with FRD low friction ring is the lightest violin block designed for pantor pulleys or jib tackers on textile tracks,
- ✓ Barber Hauler
- ✓ Returns ,
- ✓ 3D adjustment,
- ✓ Dinghy Pants...
- ✓ For Mainsail hoist on textile pantoire

Information sail@nodusfactory.com

NODUS
FACTORY

MADE IN FRANCE

www.nodusfactory.com



Scan me !

Pp Hi-Tech® - Traveler Pulley

« *Lightweight, resistant traveller pulley* »



PP®, the lightest and strongest pulley on the market.

- The small sheave of the friction ring slides over the crow's foot and the ball bearing block is used for the passage of the hoist sheet.

Our pulleys are among the strongest on the market!

Advantages

- Weight-to-strength ratio
- Performance, lightness and reliability
- Low coefficient of friction
- Load alignment via textile connector

References

| | |
|---------------|-------|
| PP Hi-Tech 30 | 20341 |
| PP Hi-Tech 40 | 20361 |

NODUS
FACTORY
MADE IN FRANCE

Parc d'Activités de Laroiseau • 5 rue Ella Maillart • F- 56000 Vannes
Tél : +33 (0)2 97 67 64 83 • Mail : sail@nodusfactory.com www.nodusfactory.com



Textile-Hook® - Friction opening pulley

« Textile hook Opening friction ring »

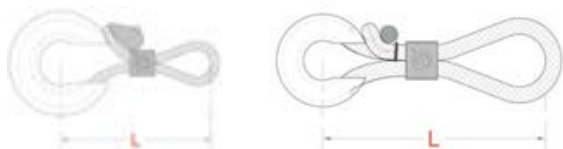


| Product Name | Breaking load | Weight | Length L | recommended rope Ø | Sail area |
|----------------|---------------|--------|----------|--------------------|-----------|
| Use | Direct | | | Halyard/Sheet | 25 kts |
| Static | Kg | gr | cm | mm | M2 ≥45° |
| TH-C 14s | 800 | 12 | 5 | 6/10 | 45/75 |
| TH-C 20s | 2000 | 24 | 7 | 10/14 | 70/110 |
| TH-M 14s | 2500 | 20 | 5 | 6/10 | 80/110 |
| TH-M 20s | 3000 | 34 | 7 | 10/14 | 110/150 |
| Dynamic | Kg | gr | cm | | |
| TH-C 14 I-tech | 400 | 10 | 5 | 6/10 | 25/40 |
| TH-C 20 I-tech | 1200 | 24 | 7 | 10/14 | 80/110 |

TECHNICAL SHEET

High-strength open low-friction ring

- ❑ Open ring hook body
 - Hook S self-lubricating thermoplastic material
 - ✓ POM / use Static, low friction T°C continuous use 100° T°C
 - Hook I-tech self-lubricating HD polymer
 - ✓ Po iTech / use Dynamic, very high friction speed Continuous operating temperature T °C +140 /180
- ❑ Dyneema® textile connector
 - ✓ DSK78 12 plaits, coated and pre-stretched
 - ✓ T-close® connector - Pa Tech glass-fiber reinforced
 - ✓ T-Bone® connector - Anodized and hard anodized aluminium



USE

The Textile-Hook® friction opening pulley

- ✓ Controls and returns sheets under tension
- ✓ Allows a rope to be passed through quickly in any situation
- ✓ Allows you to redirect a manoeuvre, a halyard or a sheet, or move a load in a different direction.

Designed to support two types of load:

- ✓ static load - Hook s
- ✓ dynamic load - Hook I-tech

Information sail@nodusfactory.com

NØDUS
FACTORY

MADE IN FRANCE

www.nodusfactory.com



Scan me !

Textile-Hook® - Friction opening pulley

« Textile hook Opening friction ring »



TH-C® & TH-M®, the Textile Hook® friction opening block is the lightest and strongest sheet control solution on the market,

- This open ring is easy to position on the rope and its textile attachment system prevents it from opening under load.
- For dynamic use, use I-Tech resin rings or the HK16 in duralumin.
- Dyneema® © shackle attachment / connection

Our Textile-hooks® are among the toughest available on the market!

Advantages

- ❑ Weight-to-strength ratio
- ❑ Performance, lightness and reliability
- ❑ Low coefficient of friction
- ❑ Load alignment via textile connector

References

| | |
|----------------|-------|
| TH-Cs 14 | 20118 |
| TH-Cs 20 | 20119 |
| TH-Ms 14 | 20120 |
| TH-Ms 20 | 20121 |
| TH-C I-tech 14 | 20221 |
| Th-C I-tech 20 | 20222 |

Nodus Tips « FAQ - Material information »

<https://www.nodusfactory.com/en/content/32-fittings-40>

| Material | Durability / Wear | Friction | T° use | T° Celsius | Dynamic | Static | Material price |
|-----------|-------------------|----------|--------|---------------|---------|--------|----------------|
| ITECH | 5/5 | 5/5 | 4/5 | + 140° / 180° | 5/5 | 4/5 | 5/5 |
| ALUMINIUM | 4/5 | 4/5 | 5/5 | + 180° / 240° | 4/5 | 5/5 | 4/5 |
| PEEK | 4/5 | 3/5 | 4/5 | + 140° / 180° | 4/5 | 5/5 | 3/5 |
| POM | 3/5 | 4/5 | 2/5 | 100° | 3/5 | 3/5 | 2/5 |

NODUS
FACTORY
MADE IN FRANCE

Parc d'Activités de Laroiseau • 5 rue Ella Maillart • F- 56000 Vannes
Tél : +33 (0)2 97 67 64 83 • Mail : sail@nodusfactory.com www.nodusfactory.com



Textile Hook Nub® - opening pulley

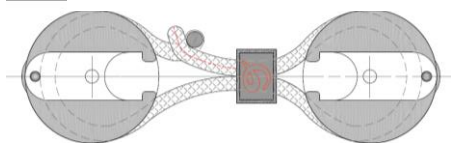
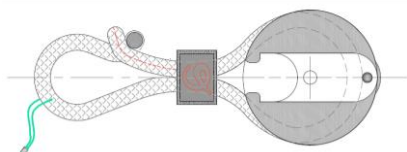
« Opening friction pulley »



| Product Name | Breaking Load | Weight | Length | Recommended rope Ø | Sail area |
|----------------------|---------------|--------|--------|--------------------|-----------|
| Static | Direct | | | Rope | 40 kts |
| Friction | Kg | gr | cm | mm | M2 ≥45° |
| TH-NUB Simple | 4 700 | 40 | 10 | 8 / 10 | 170 |
| TH-NUB Double | 4 700 | 72 | 12 | 8 / 10 | 170 |

TECHNICAL SHEET

- Nodus-Nub® open low-friction ring
 - ✓ Black thermoplastic resin
- Sheathed or over-sheathed textile connector
 - ✓ 100% Dyneema® SK78 12 plaits pre-stretched grey
- T-bone (dog bone) anodized aluminium 7075
 - ✓ Treated, hardened light grey,
- Secure Velcro fastening by winding over the textile connector
 - ✓ Twist-lock



USE

- Controls and returns of genoa or spinnaker sheets under tension.
- Allows you to Hook a loaded rope quickly, Barber inhauler, furler, 3D, ...

Information sail@nodusfactory.com

NODUS
FACTORY

MADE IN FRANCE

www.nodusfactory.com



Scan me !

Textile Hook Nub® - opening pulley

« Opening friction pulley »



T-H Nub®, Low friction open spherical ring type hook for 12 mm rope.

An open friction block that can easily be hooked to a genoa or spinnaker sheet or as a replacement for a block at the foot of the mast.

Use

- Controls and returns genoa or spinnaker sheets under tension.
- Allows you to Hook a loaded rope quickly, Barber in-hauler, furler, 3D, ...

Advantages

- Weight-to-strength ratio
- Lightweight and reliable
- Twist-Lock carabiner lock prevents the sheet from popping out

References

| | |
|---------------|-------|
| TH-NUB Simple | 20187 |
| TH-NUB Double | 20186 |

NODUS
FACTORY
MADE IN FRANCE

Parc d'Activités de Laroiseau • 5 rue Ella Maillart • F- 56000 Vannes
Tél : +33 (0)2 97 67 64 83 • Mail : sail@nodusfactory.com www.nodusfactory.com



Textile-Hook® Hk - opening friction pulley

« Opening friction ring textile-Hook »

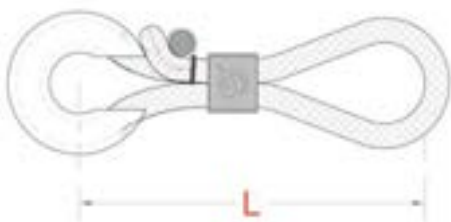


| Product Name | Breaking Load | Weight | Length L | Recommended rope Ø | Sail area |
|--------------|---------------|--------|----------|--------------------|-----------|
| Connector | Direct | | | Halyard/Sheet | 40 kts |
| Aluminum | Kg | gr | cm | mm | M2 ≥45° |
| HK16 | 6 000 | 120 | 8 | max 16mm | 160 |
| HK22 | 8 500 | 270 | custom | max 22mm | >160 |
| HK32 | 12 000 | 350 | custom | max 32mm | >160 |

TECHNICAL SHEET

High-strength open low-friction ring

- ❑ Open ring hook body
- HK Duralumin material
- ✓ Anodized and hardened
- ❑ Dyneema® high load M® overbraided shackle
- ✓ DSK78 12 plaits, coated and pre-stretched
- ✓ Oversheath 48 plaits, coated and pre-stretched
– Black
- ✓ T-bone® connector, hard anodized aluminium, for opening and closing the textile shackle
- ❑ Twist-Lock® accessory
- ✓ Velcro® Polypropylene & Velvet PA



USE

The Textile-Hook® friction opening pulley

- ✓ Controls and returns sheets under tension
- ✓ Allows a rope to be passed through quickly in any situation
- ✓ Allows you to redirect a manoeuvre, a halyard or a sheet, or move a load in a different direction.

Designed to withstand heavy loads:

- ✓ permanent static load
- ✓ dynamic load for any rope

Information sail@nodusfactory.com

NØDUS
FACTORY
MADE IN FRANCE
www.nodusfactory.com



Scan me !

Textile-Hook® Hk - Opening friction pulley

« Opening friction ring textile-Hook »



Textile-Hook HK® in duralumin is the lightest and strongest sheet control solution on the market,

- This open ring is easy to position on the rope, and its textile fastening system with double security prevents it from opening under or without load.
- For static & dynamic high load use
- Attached / connected by Dyneema® © shackle
- Nub® accessory to create a heavy-duty hoist

Our Textile-hooks® are among the toughest on the market!

Advantages

- Weight-to-strength ratio
- Performance, lightness and reliability
- Low coefficient of friction
- Load alignment via textile connector

References

| | |
|--------------------|-------|
| Textile-Hook HK 16 | 20182 |
|--------------------|-------|

Nodus Tips « **FAQ - Material information** »

www.nodusfactory.com/fr/content/32-accastillage-40

NODUS
FACTORY
MADE IN FRANCE

Parc d'Activités de Laroiseau • 5 rue Ella Maillart • F- 56000 Vannes
Tél : +33 (0)2 97 67 64 83 • Mail : sail@nodusfactory.com www.nodusfactory.com



Fairleads & Textile Padeyes®



Discover our range of stick-on padeyes, trigger guards and threaders, they advantageously replace traditional stainless steel padeyes and trigger guards.

They benefit from an excellent strength/weight ratio and good abrasion resistance thanks to Dyneema®.



Our stick-on padeyes have many advantages, lightness, resistance and are easy to install.

Equipped with a low friction ring, pulley and textile link, they allow you to create your bridge plans according to your desires and needs.



You will find that Sx textile Padeyes (adjustable Dyneema® loop), Pad-Race, Pad-Hook, Pad-Pulley, Pad-Line or even the Pad-FrD), are available in several sizes and in different models.

Our range of glue-on accessories and equipment is the lightest and strongest solution on the market.



This range allows you many applications to equip your sailboat. Easy and quick to install thanks to our two-component Nodus-Loc glue, their installations do not require drilling in your sailboat.



When and how to use Nodus-Loc®?

“Padeyes, threaders and glue-on fairleads”

The advantages of methacrylate structural glues

Methacrylate glues have the advantage of reduced surface preparation, sometimes simple dust removal where degreasing is sufficient. Methacrylate glues are very resistant to vibrations, shocks and climatic conditions. Immersion bonding is possible.

- ✓ Methacrylate glues do not need a primer, whatever the support.
- ✓ Rapid crosslinking to reduce the production cycle.
- ✓ Bonding of heterogeneous materials
- ✓ Very high resistance to shearing, impact, peeling and fatigue
- ✓ Good chemical resistance to hydrocarbons, acids and bases (pH 3 to 10) and saline solutions
- ✓ The formulation is classified neither toxic nor carcinogenic (absence of DNPT, Dimethylaniline and phthalates)
- ✓ Ease of implementation

Compare the bonding resistance of Nodus-Loc®

- Multi-purpose marine adhesive-putty 1.8 MPa
Type Sikaflex® -291i Or 18.55 Kg/cm²
- Structural methacrylate glue 12 to 24 MPa
Nodus-Loc® i.e. 122.36 Kg/cm² to 244.73 Kg/cm² (depending on support)

Comparing with Sikaflex® -291i multi-purpose marine putty glue, you will be 10 times less resistant than our Nodus-Loc glue.



Pad-SX[®] - textile Padeye to stick

Adjustable (r) or fixed (f) textile length



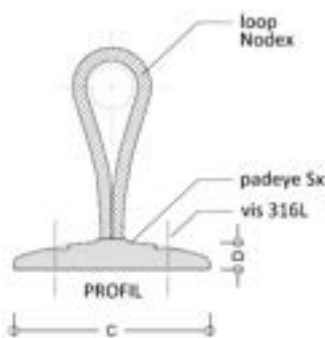
| Product Name | Resistance | Weight | Dimensions mm | | | | Length |
|-------------------|------------|--------|---------------|----|----|---|--------|
| | | | A | B | C | D | |
| | kg | gr | | | | | cm |
| Pad SX 45 | 200 kg | 12 | 3 | 35 | 45 | 6 | 30 |
| Pad SXc 45 | 200 kg | 12 | 3 | 35 | 45 | 6 | 2,5 |
| Pad SX 55 | 350 kg | 14 | 3,5 | 42 | 55 | 8 | 30 |
| Pad SXc 55 | 350 kg | 14 | 3,5 | 42 | 55 | 8 | 2,5 |

| Option - glue | Volume | Quantity | Supports |
|---------------------------------|--------|-----------|----------|
| Nodus-Loc[®] 12 | 12 ml | 6 padeyes | multiple |

TECHNICAL SHEET

Padeye SX[®] - Textile trigger guard & lashing

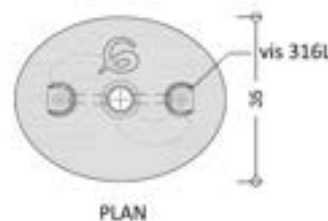
- ✓ Padeye SX 45 & 55 in glass-filled technical PA
- ✓ T-Bone T16 eco-titanium length 20mm & length 25mm
- ✓ Textile Dyneema[®] 12 plaits diameter 3 mm or 4 mm
- ✓ 316 L stainless steel screws: 2.9 mm / 18 mm (not supplied)
- ✓ Nodus-Loc Bi-component adhesive (optional)



MOUNTING

- 1- Prepare and clean the surface.
- 2- Mix and apply the two-component adhesive.
- 3- Glue and maintain pressure for at least 5'.

➤ Wait 24 hours before use



Information sail@nodusfactory.com

NODUS
FACTORY

MADE IN FRANCE

www.nodusfactory.com



Scan me !

Pad-SX[®] - Padeye textile to stick

Adjustable (r) or fixed (f) textile length



The **Pad-SX[®]** is a glue-on resin textile bridge designed and developed by Nodus Factory to meet specific on-board requirements.

- Quick and easy to install, your Pad-SX will support from 200 kg to 350 kg once fixed with Nodus-Loc[®] bi-component adhesive.
- The length of the textile bridge is adjustable for the (R) model before gluing and fixed for the (F) model.
- Its oval shape allows the pad-eye to be positioned optimally depending on the angle and direction of the load.

Use

Multi-purpose textile cable tie for hanging or hooking all your equipment in or on your boat, sunbeds, canvas covers, stowage pockets, light manoeuvring transmissions, etc.
Easy to fit and stick anywhere on deck, below deck, on the mast or boom, etc.

Advantages

- Easy to install, thanks to our bi-component adhesive
- Length of textile strands can be adjusted to suit your needs
- Versatility and flexibility, whatever the angle of pull
- Creation of new fixed points
- Optimises ergonomics, no protruding or aggressive parts
- Improves your deck plans

References

| | | |
|------------|--------------------|-------|
| Pad-SX 45r | Adjustable textile | 20132 |
| Pad-SX 55r | Adjustable textile | 20197 |
| Pad-SX 45f | Fixed textile | 20216 |
| Pad-SX 55f | Fixed textile | 20223 |

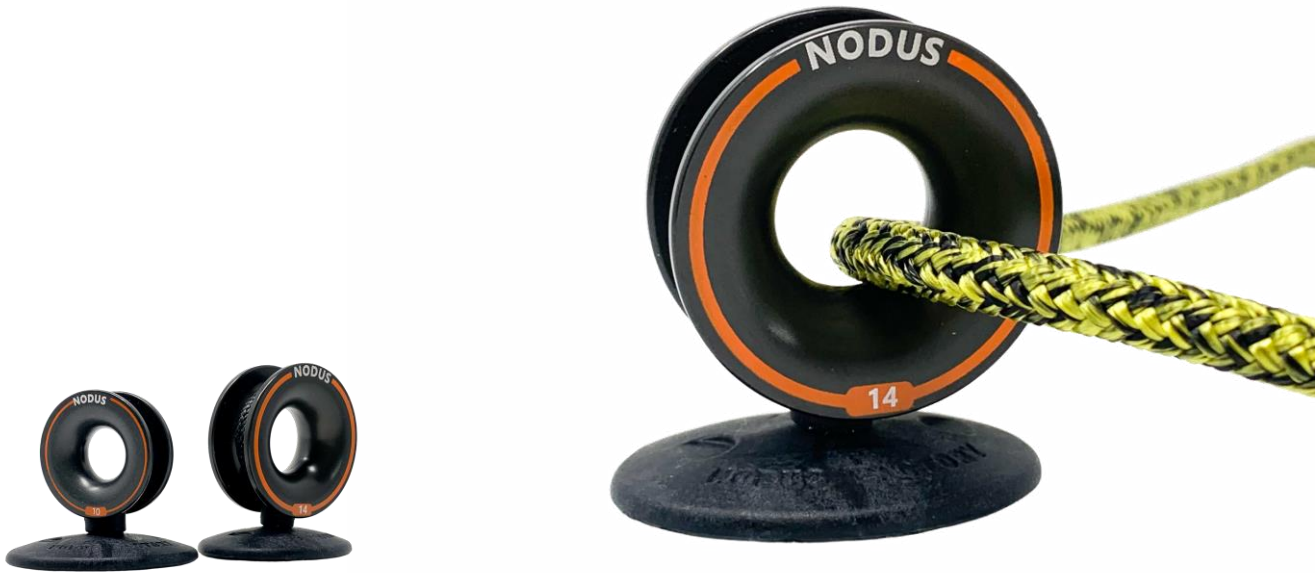
NODUS
FACTORY
MADE IN FRANCE

Parc d'Activités de Laroiseau • 5 rue Ella Maillart • F- 56000 Vannes
Tél : +33 (0)2 97 67 64 83 • Mail : sail@nodusfactory.com www.nodusfactory.com



Pad-Filoir® D - Fairlead friction ring

« Fairlead on padeye SX to stick »



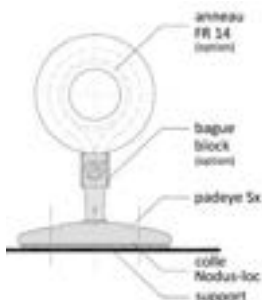
| Product Name | Breaking load | | | Dimension Ø | | | | Recommended line Ø | Weight |
|--------------------|---------------|------|------|-------------|----|----|----|--------------------|--------|
| Angle | 0° | 90° | 180° | A | B | C | D | Sheet | |
| Duralumin D | kg | kg | kg | mm | | | | mm | gr |
| Pad-Filoir 10 | 1500 | 950 | 500 | 7 | 12 | 12 | 30 | 4/8 | 8 |
| Pad-Filoir 14 | 1800 | 1100 | 650 | 10 | 16 | 16 | 40 | 6/10 | 16 |

| Option - glue | Volume | Quantity | Supports |
|----------------------|--------|-----------|----------|
| Nodus-Loc® 12 | 12 ml | 6 padeyes | multiple |

TECHNICAL SHEET

Support base to be glued

- Padeye SX® in glass-fiber reinforced technical PA
 - ✓ Length 45 mm & Width 35 mm
 - ✓ Textile Dyneema® webbing
 - ✓ T-Bone Ti6 eco-titanium
 - ✓ SK78 48x coated light grey
- Aluminium spinner for sheet guide and furling line Max 4 to 10 mm
 - ✓ FrD® friction ring in hard anodized duralumin
- Fixing by glue or screw (optional) :
 - ✓ 2 Ø 5 mm holes



MOUNTING

- 1- Prepare and clean the surface.
 - 2- Mix and apply the two-component adhesive.
 - 3- Glue and maintain pressure for at least 5'.
- Wait 24 hours before use

Information sail@nodusfactory.com

NODUS
FACTORY

MADE IN FRANCE

www.nodusfactory.com



Scan me !

Pad-Filoir® D - Fairlead friction ring

« Fairlead on padeye SX to stick »



Pad-filoir D®, self-aligning sheet wire.

Its design, with its textile axis, automatically aligns your sheet for minimum friction.

- Very easy to install, your Pad-Filoir®D will support up to 200 kg (without screws) once fixed with Nodus-Loc® bi-component adhesive.
- The oval shape of its "Padeye SX" support means that the spinner can be installed at the optimum angle and in the direction of the load.
- Essential when installing a headsail furler, the flexibility of the fabric automatically steers your sheets and ropes sideways and at an angle.

Use

- Clew lines, furling lines, turnbuckles, deck plan improvement, etc.
- For sheets and lines from 4 mm to 10 mm maximum

Advantages

- Automatic alignment
- To be glued or screwed with our Bi-component adhesive

Reference

| | |
|-----------------|-------|
| Pad-Filoir D 10 | 20282 |
| Pad-Filoir D 14 | 20283 |

Nodus Tips

- D® low-friction spinners have a non-adhesive surface due to their design and the material used. Friction is dynamic without loss of energy.
- The contact surface and automatic alignment create a low angle of friction that limits adhesion at the start of the manoeuvre and improves sliding performance.

NODUS
FACTORY
MADE IN FRANCE

Parc d'Activités de Laroiseau • 5 rue Ella Maillart • F- 56000 Vannes
Tél : +33 (0)2 97 67 64 83 • Mail : sail@nodusfactory.com www.nodusfactory.com



Pad-Pulley® I-Tech - Fairlead with Block

« Fairlead on adhesive SX padeye »



| Product Name | Pulley I-Tech | Padeye | Breaking load | | Weight |
|----------------|---------------|-----------|---------------|-----------------|--------|
| | | | Direct | Halyard / Sheet | |
| <i>PA Tech</i> | | | kg | mm | gr |
| Pad-P 20 | 20 | Pad SX-45 | 200 | 4 | 15 |
| Pad-P 30 | 30 | Pad SX-45 | 200 | 6 | 16 |
| Pad-P 40 | 40 | Pad SX-55 | 300 | 8 | 24 |

| Option - glue | Volume | Quantity | Supports |
|---------------|--------|-----------|-----------|
| Nodus-Loc® 12 | 12 ml | 6 padeyes | multiples |

TECHNICAL SHEET

- base Support to be glued
- ✓ Padeye SX® in glass-fiber reinforced technical PA
- ✓ Length 45 mm & Width 35 mm
- ✓ Textile Dyneema® webbing
- ✓ T-Bone Ti6 eco-titanium
- ✓ SK78 48x coated light grey

- I-Tech® pulley block fairlead for sheet guide and furling line Max 4 to 10 mm
- ✓ Composite block body
- ✓ Stainless steel ball bearing
- ✓ Composite sheave PA 6.6

- Attachment by glue or screw (optional) :
- ✓ 2 Ø 5mm holes

MOUNTING

- 1- Prepare and clean the surface.
- 2- Mix and apply the two-component adhesive.
- 3- Glue and maintain pressure for at least 5'.

➤ Wait 24 hours before use



Information sail@nodusfactory.com

NODUS
FACTORY

MADE IN FRANCE

www.nodusfactory.com



Scan me !

Pad-Pulley® I-Tech - Fairlead with Block

« Fairlead on adhesive SX padeye »



Pad-Poulie I-Tech®, self-aligning ball-pulley sheet fairlead.

Its design, with its textile shaft, automatically aligns your sheet to minimize friction.

Lightweight and extremely efficient, they are ideal for frequently used tuning systems.

Very easy to install, your I-tech® Pad-Pulley will support from 200 kg to 300 kg (without screws) once fixed with Nodus-Loc® bi-component glue.

For halyard and sheeting systems and other applications where you don't want the block to touch the deck. Essential when installing a headsail furler, the flexibility of the fabric automatically steers your sheets and ropes sideways and at an angle.

Use

- Clew lines, furling lines, turnbuckles, deck plan improvement, etc.
- For sheets and lines from 4 mm to 10 mm maximum

Advantages

- Automatic alignment
- To be glued or screwed with our Bi-component adhesive

References

| | |
|---------|-------|
| Pad-P20 | 20134 |
| Pad-P30 | 20135 |
| Pad-P40 | 20260 |

Nodus Tips

- Automatic alignment creates a low angle of friction that limits grip at the start of the manoeuvre and improves sliding performance.

NODUS
FACTORY
MADE IN FRANCE

Parc d'Activités de Laroiseau • 5 rue Ella Maillart • F- 56000 Vannes
Tél : +33 (0)2 97 67 64 83 • Mail : sail@nodusfactory.com www.nodusfactory.com



Pad-Line® - Adjustable cleat for rope storage

« Adjustable length »

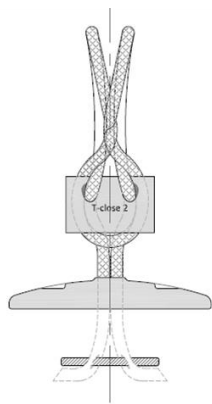


| Product Name | Load (glued) kg | Weight gr | Pad Dimension (mm) | | | | Rope Length Cm |
|----------------------|--------------------|--------------|--------------------|----|----|---|-------------------|
| | | | A | B | C | D | |
| Pad-line | 250 kg | 15 | 3 | 35 | 45 | 6 | 30 |
| Option - glue | Volume | Quantity | Supports | | | | |
| Nodus-Loc® 12 | 12 ml | 6 padeyes | multiples | | | | |

TECHNICAL SHEET

Padeye Pad-Line® - Textile cleat and lashing

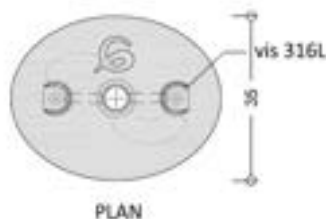
- ✓ Padeye SX 45 in glass-fiber reinforced technical PA
- ✓ T-Bone T16 eco-titanium
- ✓ T-close connector in technical PA
- ✓ Textile Dyneema® 12 plaits diameter 3 mm
- ✓ 316 L stainless steel screws: 2.9 mm / 18 mm (not supplied)
- ✓ Nodus-Loc Bi-component adhesive (optional)



MOUNTING

- 1- Prepare and clean the surface.
- 2- Mix and apply the two-component adhesive.
- 3- Glue and maintain pressure for at least 5'.

➤ Wait 24 hours before use



Information sail@nodusfactory.com

NODUS
FACTORY

MADE IN FRANCE

www.nodusfactory.com



Scan me !

Pad-Line® - Adjustable cleat for rope storage

« Adjustable length »



Pad-line®, a textile rope storage cleat that can be screwed on or glued on, is the ideal solution for storing your ropes and sheets once you're on board.

- Very easy to install, your Pad-line® cleat allows you to clear the cockpit of your various ropes and sheets while keeping them neatly coiled and ready for immediate use.

Use

- The Pad-line cleat, once fixed to the wall, keeps your ropes well coiled thanks to a toggle.
- Easy to fit and stick anywhere on deck, below deck or on the mast

Advantages

- Ideal storage for halyards and sheets
- Easy to install, thanks to our bi-component adhesive
- The length of the textile strands can be adjusted to suit your needs
- No protruding or aggressive parts

References

| | |
|----------|-------|
| Pad-Line | 20136 |
|----------|-------|

Nodus Tips

- Tie the line correctly and pass the string through the skein, then attach the string to the T-close connector.
- Ideal for hanging halyards in the cockpit when leaving the clam cleats!

NODUS
FACTORY
MADE IN FRANCE

Parc d'Activités de Laroiseau • 5 rue Ella Maillart • F- 56000 Vannes
Tél : +33 (0)2 97 67 64 83 • Mail : sail@nodusfactory.com www.nodusfactory.com



Pad-RACE® - « Padeye » Chainplate to stick



| Product Name | Glue resistance | Weight | Pad dimensions (mm) | | |
|--------------------|-----------------|--------|---------------------|----|----|
| | | | H | L | I |
| | kg | gr | | | |
| Pad Race 45 | 200 kg | 6 | 10 | 45 | 35 |
| Pad Race 55 | 350 kg | 8 | 12 | 55 | 40 |

| Option - glue | Volume | Quantity | Supports |
|----------------------|--------|-----------|-----------|
| Nodus-Loc® 12 | 12 ml | 6 padeyes | multiples |

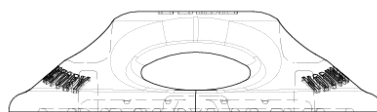
TECHNICAL SHEET

Pad-Race® - Chainplate & textile lashing

- Pad-Race available in bio-sourced PA11 or PA12
- ✓ Length 45 mm - Width 35 mm - Height 10 mm
- ✓ Length 55 mm - Width 42 mm - Height 12 mm
- Nodus-Loc Bi-component glue (not supplied)
- LOOP webbing in 48 plaits Dyneema®, sewn splice



MOUNTING



- 1- Prepare and clean the surface.
- 2- Mix and apply the two-component adhesive.
- 3- Glue and maintain pressure for at least 5'.

➤ Wait 24 hours before use

Information sail@nodusfactory.com

NODUS
FACTORY

MADE IN FRANCE

www.nodusfactory.com



Scan me !

Pad-RACE® - « Padeye » Chainplate to stick



The Pad-Race® is a resin padlock designed and developed by Nodus Factory™ in collaboration with Team Paprec-Arkea to meet specific onboard requirements.

- Quick and easy to install, your Pad-Race will support between 200 kg and 350 kg once fixed with Nodus-Loc® bi-component glue.
- Its oval shape means that the pad-eye can be installed at the optimum angle and in the direction of the load.

Use

- Multi-purpose textile chainplate for light manoeuvres
- Easy to fit and stick anywhere on deck, below deck, on the mast or boom,...

Advantages

- Creation of new fixed points
- Quick and easy to install, thanks to our bi-component adhesive
- Optimized ergonomics, with no protruding or aggressive parts
- Versatility and flexibility, whatever the angle of pull
- Improves your deck plans

References

| | |
|-------------|-------|
| Pad-Race 45 | 20169 |
| Pad-Race 55 | 20166 |



Parc d'Activités de Laroiseau • 5 rue Ella Maillart • F- 56000 Vannes
Tél : +33 (0)2 97 67 64 83 • Mail : sail@nodusfactory.com www.nodusfactory.com



Pad-FILOIR® - Fairlead for halyard and rope

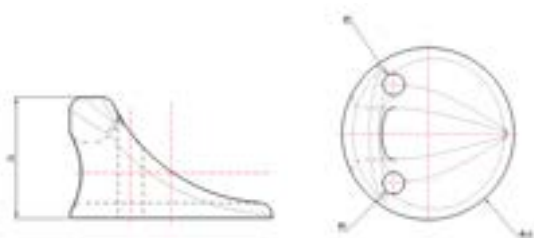
« adhesive Mast fairlead I-Tech »



| Product Name | Glue resistance | | Weight | Pad dimensions (mm) | |
|----------------------|-----------------|-----------|-----------|---------------------|--------|
| | kg | gr | | Diameter | Height |
| Fairlead-Pad | 250 | 11,4 | 24 | 24 | |
| Option - glue | Volume | Quantity | Supports | | |
| Nodus-Loc® 12 | 12 ml | 6 padeyes | multiples | | |

TECHNICAL SHEET

- I-Tech resin glue line for Max 10/12 mm halyard leads, sheets and furling lines
- Base :
 - ✓ Diameter 40
 - ✓ Height 24 mm
 - ✓ Thickness 6 mm
 - ✓ Weight: 11.4 grams
- Fixing by glue or screws (screws not supplied) :
 - ✓ 2 Ø 5 mm holes



MOUNTING

- 1- Prepare and clean the surface.
- 2- Mix and apply the two-component adhesive.
- 3- Glue and maintain pressure for at least 5'.

Wait 24 hours before use

Information sail@nodusfactory.com

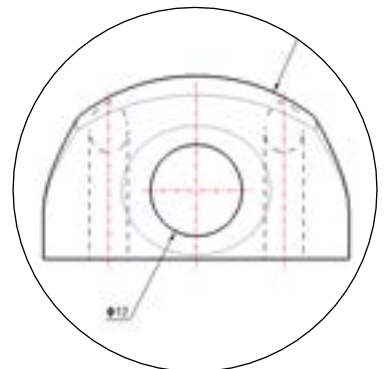
NØDUS
FACTORY
 MADE IN FRANCE
www.nodusfactory.com



Scan me !

Pad-FILOIR® - Fairlead for halyard and line

« adhesive Mast fairlead I-Tech »



The glue-on furling line and spinnaker halyard pad is specifically designed to be glued to a mast, boom or deck for a sheet or furling line.

- Essential for the installation of a headsail furler or spinnaker halyard, the designed shape of the line allows a lateral deviation of + 30° (left or right).

Use

- Mast, boom, spinnaker halyard, clew line, furling line, pulleys, deck layout improvement
- The Pad-Filoir®, once glued to the wall, mast or boom, guides your ropes and halyards
- Ø halyard or line 10 mm max : 12 mm

Advantages

- Stick or screw with our two-component glue
- Simple and easy to use

Reference

| | |
|------------|-------|
| Pad-Filoir | 20188 |
|------------|-------|

Nodus Tips

- I-Tech® low-friction fairleads have a non-adhesive surface due to their design and the material used. Friction is dynamic without loss of energy.
- The contact surface creates an angle of friction that limits adhesion at the start of the manoeuvre and improves sliding performance.



Parc d'Activités de Laroiseau • 5 rue Ella Maillart • F- 56000 Vannes
Tél : +33 (0)2 97 67 64 83 • Mail : sail@nodusfactory.com www.nodusfactory.com



Pad-HOOK® - Padeye Halyard Organizers

« Adhesive accessory for organising halyards and sheets »



*Garcette textile

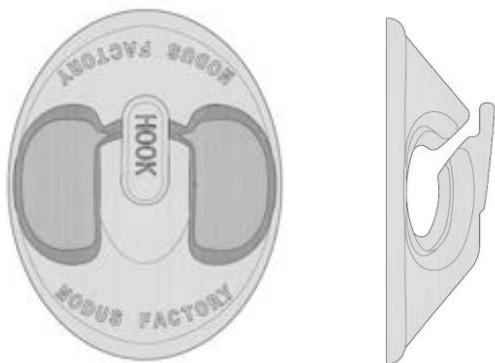


| Product Name | Glue resistance | Weight | Pad dimensions (mm) | | |
|-----------------|-----------------|--------|---------------------|-------|--------|
| | | | Length | Width | Height |
| Pad-Hook | 200 kg | 4 gr | 45 | 35 | 15 |

| Option - glue | Volume | Quantity | Supports |
|----------------------|--------|-----------|-----------|
| Nodus-Loc® 12 | 12 ml | 6 padeyes | multiples |

TECHNICAL

- Padeye ready-to-use adhesive in biosourced technical PA
- Length 45 mm & Width 35 mm
- Textile toggle (*optional)



MOUNTING

- 1- Prepare and clean the surface.
- 2- Mix and apply the two-component adhesive.
- 3- Glue and maintain pressure for at least 5'.

➤ Wait 24 hours before use

Information sail@nodusfactory.com

NODUS
FACTORY
 MADE IN FRANCE
www.nodusfactory.com



Scan me !

Pad-HOOK® - Padeye Halyard Organizers

« Adhesive accessory for organising halyards and sheets »



The **Pad-Hook®** is a glue-on textile cleat that keeps all your ropes and lines well coiled and always ready to use and within easy reach.

- Ideal for hanging halyards in the cockpit when leaving the clam cleats!
- Very easy to install, your Pad-Hook® glue cleat allows you to organize your onboard stowage

Advantages

- No drilling required, thanks to our bi-component adhesive
- Interchangeable rope with adjustable length
- Simple and easy to use

References

| | |
|----------|-------|
| Pad-Hook | 20305 |
|----------|-------|

Nodus Tips

- Tie your rope correctly and pass the toggle through the skein, then hook the toggle into the Pad-Hook.

NODUS
FACTORY
MADE IN FRANCE

Parc d'Activités de Laroiseau • 5 rue Ella Maillart • F- 56000 Vannes
Tél : +33 (0)2 97 67 64 83 • Mail : sail@nodusfactory.com www.nodusfactory.com



Accessories - Ropes & Mooring



Comfort & anchorage

A section for comfort on board: textile connectors and blockers, comfort fittings, tips of all kinds to feel good on board both when sailing and at anchorage.

- ✓ Comfort on board and at anchorage!
- ✓ Memory foam cockpit cushion
- ✓ Boom strap
- ✓ Multifunction strap
- ✓ Elastic bungee sail T-Sandow
- ✓ Dock-line mooring
- ✓ Lazy-jack rope



How to optimize and improve comfort on board!

- A Lazy-Jack rope and these accessories

A range of moorings with a Polyamide core and Polyester sheath | Nodus-Dockline®



A polyester mooring rope with an elongation of <math><25\%</math>, ideal for use at the pontoon, at the quay or for mooring alongside another boat. Pleasant to handle and very resistant to abrasion.



Ropes and moorings

Particularly flexible and light, our polyester mooring for all types of boats (sailing, motor, etc.), provides security, longevity and cushioning of boat movements.

Our mixed mooring rope will provide you with security, durability and good shock absorption.

The quality of the materials used, polyester sheath and polyamide core, guarantees high resistance to abrasion while cushioning the boat's movements thanks to the property of polyamide.

Polyamide core and 32-layer polyester sheath, very good resistance to UV and abrasion.

Features

- Very good flexibility
- Pleasant handling
- UV resistant
- Excellent elasticity <25%
- Comfort on the pontoon and at the quay, gentle mooring
- Easy to splice

If the rope for the sheets and halyards must be as rigid as possible to handle a lot of friction, the rope for the moorings must offer maximum flexibility to absorb hits.

Each rope has a specific use and it is important to check its characteristics to use it properly.

For this, we offer you a comparative table!

Strap S T-close® - Adjustable boom strap

« Adjustable Dyneema® boom strap with T-close connector »



| Product Name | Breaking Load | Weight | Loop Length | Boom Height | Sail area |
|--------------|---------------|--------|-------------|-------------|-----------|
| | Basket | | Straight | Straight | 40 kts |
| | kg | gr | max cm | cm | m2 |
| S 3 F | 750 | 12 | 55 | 12 | 30 |
| S 3 G | 750 | 16 | 72 | 16 | 30 |
| S 5 H | 1900 | 49 | 90 | 20 | 50 |
| S 6 I | 2600 | 56 | 110 | 25 | 70 |

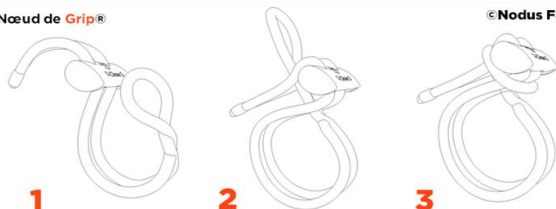
TECHNICAL SHEET

- ❑ 100% Dyneema®
- ✓ SK78 12 plaits pre-stretched, coated → Light grey/black
- ❑ T-close connector → Movable locking piece, several sizes available
- ✓ T-close® connector → Glass-filled PA Tech
- ❑ 100% HD polyester overlay
- ✓ Tightly woven and coated → Black or white
- ✓ Structural termination, bonded and crimped in HDPE

USE

- ❑ Adjustable textile "tie" strap connector for attaching the clew of a freeboard mainsail to the boom
- ❑ Adjustable, self-locking Dyneema® loop
- ❑ How to change the length of the loop :
 - Slide on the T-close® connector, then secure with the Grip© knot.

Nœud de Grip®



©Nodus Factory

Information sail@nodusfactory.com

NODUS
FACTORY

MADE IN FRANCE

www.nodusfactory.com



Scan me !

Strap S T-close® - Adjustable boom strap

« Adjustable Dyneema® boom strap with T-close connector »



S T-close® is a 'tie' strap for securing the clew of a free-sailing mainsail to the boom.

- Adjustable, self-locking attachment using the T-close® mobile connector.

Advantages

- Lightweight and quick to install
- The flexibility of the fabric means that it can be used in line with strains
- Easy to use → Closes with a minimum of 4 half-keys
- Highly resistant to UV and abrasion

References

| | |
|------|-------|
| S3 F | 20101 |
| S3 G | 20102 |
| S5 H | 20103 |
| S6 I | 20104 |

Nodus Tips

- You can use the T-close adjustable boom strap to attach and adjust the height of your mainsail hoists directly on the boom..

NODUS
FACTORY
MADE IN FRANCE

Parc d'Activités de Laroiseau • 5 rue Ella Maillart • F- 56000 Vannes
Tél : +33 (0)2 97 67 64 83 • Mail : sail@nodusfactory.com www.nodusfactory.com



Boomstrap SC[®] - Adjustable boomstrap

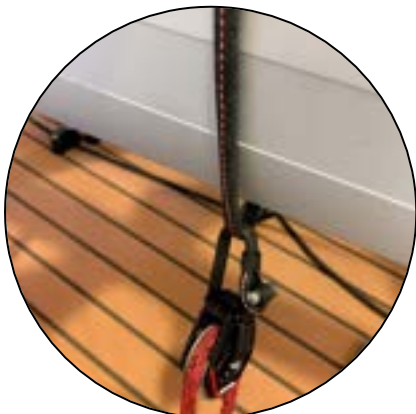
« Adjustable Dyneema[®] boomstrap with lashing »



| Product Name | Breaking Load | Weight | Loop Length | Boom Height | Sail area |
|--------------|---------------|--------|-------------|-------------|-----------|
| | Basket | | Straight | Straight | 40 kts |
| | kg | gr | max cm | cm | m2 |
| Sc 2 | 1000 | 9 | 20 | 8 | 30 |
| Sc 3 | 2000 | 12 | 30 | 12 | 60 |
| Sc 4 | 3000 | 23 | 40 | 16 | 80 |
| Sc 5 | 4000 | 30 | 50 | 20 | 100 |

TECHNICAL SHEET

- 100% Dyneema[®] sewn webbing
- ✓ 48 plaits pre-stretched, coated - black
- Structural eye termination - sewn
- Lashing in Dyneema[®] SK78
- ✓ SK78 12 plaits pre-stretched, coated - light grey / black
- Glued and crimped termination in PEDH



USE

- Adjustable "tie" textile strap connector for attaching the clew of a free-sailing mainsail to the boom
- Loop adjustable by lashing, supplied, fastened with a minimum of 4 half-keys.

Information sail@nodusfactory.com

NODUS
FACTORY

MADE IN FRANCE

www.nodusfactory.com



Scan me !

Boomstrap SC® - Adjustable boomstrap

« Adjustable Dyneema® boomstrap with lashing »



SC® is a "tie" strap used to attach the clew of a free-sailing mainsail to the boom.

- Adjustable attachment with lashing supplied in Dyneema®.

Advantages

- Lightweight and quick to install
- The flexibility of the fabric means that it can be used in line with strains
- Easy to use → Closes with a minimum of 4 half-hitches
- Highly resistant to UV and abrasion

References

| | |
|------|-------|
| Sc 2 | 20105 |
| Sc 3 | 20106 |
| Sc 4 | 20107 |
| Sc 5 | 20108 |

NØDUS
FACTORY
MADE IN FRANCE

Parc d'Activités de Laroiseau • 5 rue Ella Maillart • F- 56000 Vannes
Tél : +33 (0)2 97 67 64 83 • Mail : sail@nodusfactory.com www.nodusfactory.com



T-lazy® - Adjustable strope for lazy-jack

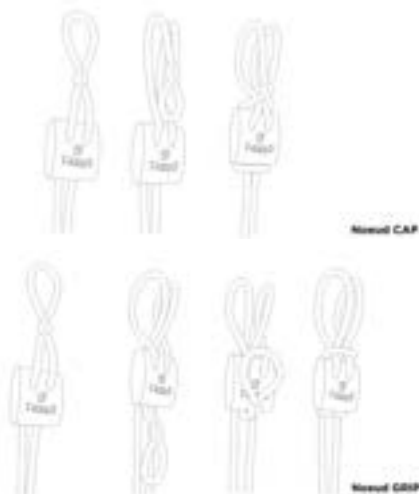
« Adjustable textile clamp with T-lazy® connector »



| Product Name | Breaking load | Weight | Adjustable Loop mini / maxi |
|----------------|---------------|--------|-----------------------------|
| | kg | gr | cm |
| T-I 3 C | 440 | 18 | 45/85 |
| T-I 3 R | 1100 | 16 | 45/85 |

TECHNICAL SHEET

- ❑ 100% Dyneema® or HD polyester rope
- ✓ (R) SK78 12 plaits pre-stretched, coated - Light grey/black
- ✓ (S) Pre-coated PES - Grey
- ❑ T-lazy® connector - Movable locking piece,
- ✓ Glass-filled PA Tech
- ✓ Structural termination, bonded and crimped in HDPE



USE

How to change the length of the loop :

- ✓ Slide on the T-lazy® connector, then make the locking closure with the Grip® Knot.

Mounting:

1. Put the textile loop on the T-Lazy® connector
2. Slide the connector to the desired height, take up and tighten the tie, release the tie. The system is locked,

Information sail@nodusfactory.com

NODUS
FACTORY

MADE IN FRANCE

www.nodusfactory.com



Scan me !

T-lazy® - Adjustable strope for lazy-jack

« Adjustable textile clamp with T-lazy® connector »



T-Lazy, adjustable textile blocker for Lazy-bag, Lazy-jack and awning.

- Allows you to fine-tune your Lazy-bags and awnings quickly and easily.
- Adjustable loop, slide on the T-Lazy connector, then lock with the Cap® or Grip® knot in the agitated zone for total locking.

Advantages

- Easy and quick to use
- User friendly → Closing → Cap® or Grip® knot, adjustable & quick
- Replaces knots, clam-cleats and other devices

References

| | |
|--------|-------|
| T-I3 C | 20161 |
| T-I3 R | 20162 |

Nodus Tips

- You can use the T-lazy® adjustable textile blocker to attach and furl your sails.



NODUS
FACTORY
MADE IN FRANCE

Parc d'Activités de Laroiseau • 5 rue Ella Maillart • F- 56000 Vannes
Tél : +33 (0)2 97 67 64 83 • Mail : sail@nodusfactory.com www.nodusfactory.com



Multi-purpose strap® - Polyester HT

« Adjustable multi-purpose strap »



| Product Name | Width | Length | Locking resistance |
|-----------------|-------|--------|--------------------|
| | mm | mm | Kg |
| Strap 55 | 25 | 550 | 135 |
| Strap 65 | 25 | 650 | 135 |

TECHNICAL SHEET

- Adjustable strap
- White colour
- UV-resistant HT polyester
- PA 6.6 clip buckle

- Recommended load capacity
- Max 135 kg
- Completely weatherproof

USE

- Multi-purpose fastener
- Clip closure system
- Easy to use
- Fitting of mainsail and headsails
- Trim canvas
- Canopy and bonnet
- Perfect for securing objects to be transported
- For securing light loads

Information sail@nodusfactory.com

NODUS
FACTORY

MADE IN FRANCE

www.nodusfactory.com



Scan me !

Multi-purpose strap®

« Adjustable multi-purpose strap »



Multi-purpose adjustable strap with black plastic buckle-clip system.

- This strap is multi-purpose (storage, locking, tightening, etc.).
- 135KG locking strength (the clip releases but does not break).

Advantages

- ❑ Lightweight and durable
- ❑ Firm, secure fit
- ❑ High-quality ironing buckle
- ❑ Material: 100% polyester PES
- ✓ Strap width: 2.5 cm
- ✓ Strap length: 55 cm / 65 cm or made to measure

References

| | |
|----------|--------|
| Strap 55 | 20362 |
| Strap 65 | 20363 |
| MI strap | xxxxxx |

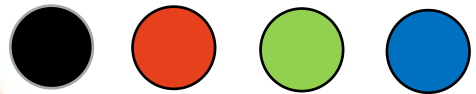
NØDUS
FACTORY
MADE IN FRANCE

Parc d'Activités de Laroiseau • 5 rue Ella Maillart • F- 56000 Vannes
Tél : +33 (0)2 97 67 64 83 • Mail : sail@nodusfactory.com www.nodusfactory.com



T-Sandow® - Sandow-elastic tensioner

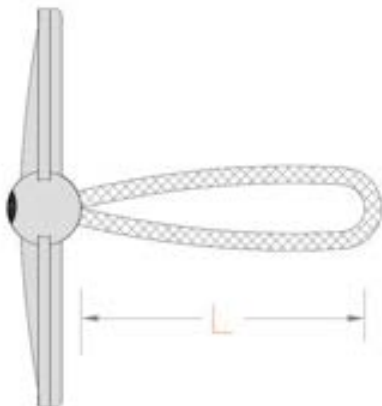
« Tensioner with ferlette »



| Product Name | Maximum load capacity | Length of elongation | Length |
|-----------------|-----------------------|----------------------|-------------|
| | Kg | % | cm |
| T-Sandow | 40 kg | 70 | 8 / 13 / 20 |

TECHNICAL SHEET

- T-Sandow® elastic tensioner
- Various lengths L 8 / 13 / 20 cm
- Stretch length: 70
- Recommended load capacity max. 40 kg
- Completely weatherproof
- 30% fiber-reinforced technical PA T-strap



USE

- Furling the mainsail and headsails
 - ✓ Lee cloth
 - ✓ Sail and spinnaker bags
 - ✓ Canopy and bonnet
- Multi-purpose attachment
 - ✓ Fishing rod
 - ✓ Paddle
 - ✓ Boom gaff



Information sail@nodusfactory.com

NODUS
FACTORY

MADE IN FRANCE

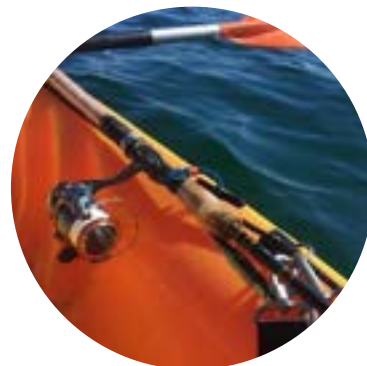
www.nodusfactory.com



Scan me !

T-Sandow® - Sandow-elastic tensioner

« Tensioner with ferlette »



Multi-purpose Nodus T-Sandow® elastic tensioner or toggle, this accessory is suitable for the marine environment.

➤ Locking strength 40KG

The T-Nodus Sandow® tensioner is made from top-of-the-range natural rubber and a high-tenacity polyester sheath. The T-connector is made from technical polyamide.

Advantages

☐ The T-Sandow tensioner is easy to use and install.

References

| | |
|-------------|-------|
| T-Sandow 8 | 30006 |
| T-Sandow 13 | 30007 |
| T-Sandow 20 | 30008 |

NODUS
FACTORY
MADE IN FRANCE

Parc d'Activités de Laroiseau • 5 rue Ella Maillart • F- 56000 Vannes
Tél : +33 (0)2 97 67 64 83 • Mail : sail@nodusfactory.com www.nodusfactory.com



T-Bat® - Adjustable fender cleat for boats

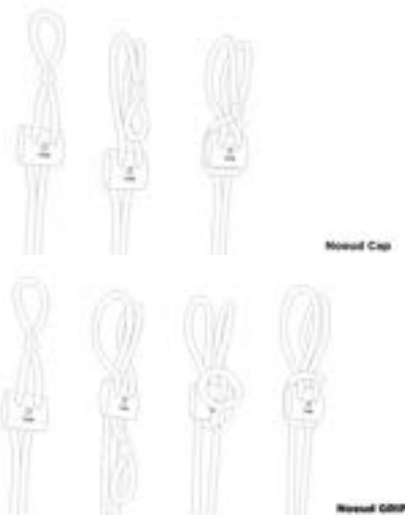
« Clam cleat" textile blocker for fenders »



| Product Name | Breaking Load | Adjustable Loop | |
|---------------|---------------|-----------------|-------------|
| | | mini / maxi | mini / maxi |
| | | Low Line | High Line |
| | kg | cm | cm |
| T-b 8 | 1100 | 35/75 | 45/90 |
| T-b 10 | 1600 | 45/85 | 50/100 |

TECHNICAL SHEET

- 100% HD polyester rope
- ✓ Pre-coated PES → Grey
- T-Bat® connector → Movable locking piece,
- ✓ Glass-filled PA Tech
- ✓ Structural termination, bonded and crimped in HDPE



USE

- E T-bat → Adjustable bracket → For fenders and boat guards
- ✓ Can be fixed freely to rails, balconies and handrails
- ✓ Prevents knots
- Installation :
 1. Pass the strop around the lifeline
 2. Place the textile loop on the T-bat connector according to the choice of "Cap or Grip" knot
 3. Adjust the height by sliding the connector, release the tie and it's locked.

Information sail@nodusfactory.com

NODUS
FACTORY

MADE IN FRANCE

www.nodusfactory.com



Scan me !

T-Bat® - Adjustable fender cleat for boats

« Clam cleat" textile blocker for fenders »



T-bat®, textile device for quickly adjusting and attaching your fenders and fenders to dies.

Allows you to quickly install and adjust your fenders

Adjustable bracket, slide on the T-bat connector, then secure with the Cap® or Grip® knot in agitated areas for total locking.

Advantages

- Quick and easy to install
- Easy to use → Closure → Cap® or Grip® knot → Quick adjustment
- Replaces knots, cleats and other devices

References

| | |
|----------|-------|
| T-Bat 8 | 20163 |
| T-Bat 10 | 20164 |

NØDUS
FACTORY
MADE IN FRANCE

Parc d'Activités de Laroiseau • 5 rue Ella Maillart • F- 56000 Vannes
Tél : +33 (0)2 97 67 64 83 • Mail : sail@nodusfactory.com www.nodusfactory.com



Lab-One® - Cockpit beanbag

« Comfort cushion for the helmsman »



| Product Name | Weight | Width | Height | Base |
|------------------|--------|-------|--------|------|
| | Gramme | cm | cm | cm |
| « Blue » Lab One | | 50 | 64 | 45 |
| « Grey » Lab One | | 50 | 64 | 45 |

TECHNICAL SHEET

- Seat surface and backrest in treated acrylic fabric
- Undercover with polystyrene ball-filled closure
- PA6 zip fastener
- Lab One® model registered by Nodus Factory™



USE

- Ball comfort cushion for helmsman and crew
- ✓ It revolutionises comfort at the helm, an anatomical, non-conformist 'armchair' that offers a new way of sitting or leaning back!
- Freely fixable onto the rope:
- Nodus Factory® carabiner or textile shackle
- T-Sandow® elastic tensioner

Information sail@nodusfactory.com

NODUS
FACTORY
MADE IN FRANCE
www.nodusfactory.com



Scan me !

Lab-One® - Cockpit beanbag

« Comfort cushion for the helmsman»



Lab One®, a ball cushion specially designed for comfortable support when heeling. The pressure exerted on the seat compresses the padding to create the backrest support.

Sitting on Lab-One, you can fidget or concentrate on your navigation... But whatever position you adopt, it adapts to your every need.

Its secret? Expanded polystyrene balls enclosed in a vinyl bag, so small that when stacked together they mould perfectly to the shape of your body.

Advantages

- Comfort
 - ✓ protects against cold and damp when seated
- Stability
 - ✓ lumbar support for better helm control
 - ✓ Maintains the seat even when heeling over
- Efficiency
 - ✓ extremely light, contains no metal structures
 - ✓ Safety and buoyancy guaranteed by polystyrene balls
 - ✓ Side pocket with two compartments

References

| | |
|--------------|-------|
| Lab-One Bleu | 20351 |
| Lab-One Gris | 20352 |

NODUS
FACTORY
MADE IN FRANCE

Parc d'Activités de Laroiseau • 5 rue Ella Maillart • F- 56000 Vannes
Tél : +33 (0)2 97 67 64 83 • Mail : sail@nodusfactory.com www.nodusfactory.com



Halyard HT[®] - Polyester PES-HT « core and sheath »

« Catégorie cruising / croisière »

| ∅ mm | Breaking load kg | Sail Area 25 kts M2 | Sail Area 40 kts M2 |
|---------|---------------------|------------------------|------------------------|
| 4 | 400 | 24 | 11 |
| 5 | 650 | 39 | 18 |
| 6 | 810 | 49 | 22 |
| 7 | 1230 | 74 | 34 |
| 8 | 1650 | 100 | 45 |
| 10 | 2500 | 151 | 69 |
| 12 | 3500 | 211 | 96 |
| 14 | 4500 | 271 | 124 |
| 16 | 5100 | 308 | 140 |
| 18 | 6290 | 377 | 173 |
| 20 | 7100 | 428 | 195 |



TECHNICAL SHEET

❑ CONSTRUCTION

- ✓ 4 to 6mm: 16 plaits / 8 to 20mm: 32 plaits.
- ✓ Double braid.

❑ COMPOSITION

- ✓ Core : Polyester HT.
- ✓ Cover : Polyester HT.

❑ WORKING STRETCH

- <5%

❑ FEATURES

- UV protection, non-slip in stoppers and easy to splice.

USE

❑ APPLICATIONS

- Excellent control lines, cruising and multipurpose.

Guidelines for Rope Length :

❑ Halyards :

- Main Halyard – Mast length x 2.5
- Genoa Halyard – Mast length x 2.5
- Genoa Halyard (fractional rig) – Mast length x 2
- Spinnaker / gennaker halyard – Mast length x 2.5

Information sail@nodusfactory.com

NODUS
FACTORY

MADE IN FRANCE

www.nodusfactory.com



Scan me !

Halyard HT[®] - Dyneema[®] & Polyester « mixed core and sheath »

«Performance & competition category »

| ∅ mm | Breaking load kg | Sail Area 25 kts M2 | Sail area 40 kts M2 |
|------|------------------|---------------------|---------------------|
| 4 | 600 | 36 | 16 |
| 5 | 930 | 56 | 26 |
| 6 | 1290 | 78 | 35 |
| 8 | 2200 | 133 | 60 |
| 10 | 3800 | 229 | 104 |
| 12 | 5000 | 302 | 137 |
| 14 | 6700 | 404 | 184 |
| 16 | 8670 | 523 | 238 |
| 18 | 9500 | 573 | 261 |
| 20 | 11560 | 697 | 318 |



TECHNICAL

- CONSTRUCTION
 - ✓ 4 to 6mm: 16 plaits / 8 to 20mm: 32 plaits
 - ✓ Double braid
- COMPOSITION
 - ✓ Core: Dyneema[®] SK78 and PES-HT
 - ✓ From 10 mm additional braid
 - ✓ Cover: PES-HT polyester with high-twist yarn.
- LENGTHENING
 - ✓ <3%
- FEATURES
 - ✓ UV protection
 - ✓ Abrasion resistant
 - ✓ Non-slip coating
 - ✓ Good grip on winch and cleat
 - ✓ Technical splice

USE

- APPLICATIONS
 - ✓ Performance and competition halyards and sheets.
 - ✓ Multi-purpose line with low elongation
- Calculate the length of the halyard:
 - ✓ Mainsail halyard - Length of mast x 2.5
 - ✓ Genoa halyard - Length of mast x 2.5
 - ✓ Genoa halyard (split rig) - Length of mast x 2
 - ✓ Spinnaker / gennaker halyard - Length of mast x 2.5

Information sail@nodusfactory.com

NODUS
FACTORY

MADE IN FRANCE

www.nodusfactory.com



Scan me !

Sheet HT[®] - Polyester PES-HT « core and sheath »

« Catégorie de usage / croisière »

| ∅ mm | Breaking load kg |
|------|------------------|
| 4 | 400 |
| 5 | 650 |
| 6 | 810 |
| 7 | 1230 |
| 8 | 1650 |
| 10 | 2500 |
| 12 | 3500 |
| 14 | 4500 |
| 16 | 5100 |
| 18 | 6290 |
| 20 | 7100 |



TECHNICAL SHEET

- CONSTRUCTION
 - ✓ 4 to 6mm: 16 plait / 8 to 20mm: 32 plait.
 - ✓ Double braid.
- COMPOSITION
 - ✓ Core: Polyester HT.
 - ✓ Cover, Our non-slip fiber, Grip fiber and Polyester HT.
- WORKING STRETCH
 - <5%
- FEATURES
 - Non-slip, handling, easy to splice and UV protection.

USE

- APPLICATIONS
 - Excellent cruising sheet and multipurpose.

Information sail@nodusfactory.com

NODUS
FACTORY
MADE IN FRANCE
www.nodusfactory.com



Scan me !

Sheet HT[®] – Dyneema[®] & Polyester « mixed core and sheath »

« Catégorie cruising / croisière »

| ∅ mm | Breaking load kg | Sail area 25 kts M2 | Sail area 40 kts M2 |
|------|------------------|---------------------|---------------------|
| 4 | 490 | 30 | 13 |
| 5 | 800 | 48 | 22 |
| 5 | 1205 | 73 | 33 |
| 6 | 1400 | 84 | 38 |
| 8 | 1950 | 118 | 54 |
| 10 | 2408 | 145 | 66 |
| 12 | 2888 | 174 | 79 |
| 14 | 3490 | 211 | 96 |
| 16 | 4253 | 257 | 117 |



TECHNICAL SHEET

❑ CONSTRUCTION

- ✓ 4 to 6mm: 16 plaits / 8 to 20mm: 32 plaits
- ✓ Double braids

❑ COMPOSITION

- ✓ Core: Mixed SK78 & Polypropylene HT.
- ✓ Sheath: Anti-slip coating, grip fiber and PES-HT polyester.

❑ Elongation

- ✓ <3%

❑ CHARACTERISTICS

- ✓ Non-slip
- ✓ Lightweight
- ✓ Good abrasion resistance
- ✓ Easy to splice
- ✓ UV protection

USE

Dyneema[®] and HT polyester sheeting rope, ideal for spinnaker sheets or mainsails, for coastal and long distance cruising.

A strong, flexible rope with excellent value for money, ideal for most sailors.

APPLICATIONS

Excellent all-round cruising sheet.

Information sail@nodusfactory.com

NODUS
FACTORY

MADE IN FRANCE

www.nodusfactory.com



Scan me !

Lazy-Jack® braid® – Polyester PES-HT

« Coated »

| ø mm | Breaking load kg |
|------|------------------|
| 3 | 330 |
| 4-5 | 540 |
| 6-7 | 1130 |
| 8 | 2200 |
| 10 | 3090 |



➤ Made to measure

TECHNICAL SHEET

- CONSTRUCTION
 - ✓ 3 to 10 mm: 16 plaits
 - ✓ Single braid
- COMPOSITION
 - ✓ Polyester PES-HT.
- CHARACTERISTICS
 - ✓ UV protection, easy to splice and abrasion-resistant.
- ACCESSORIES



USE

- APPLICATIONS
 - ✓ Special braid for lazy-jack
- Lazy-Jack Nodusfactory :
 - ✓ Lazy-Jack made to measure in Dyneema® or polyester fabric, ready to install on your sailboat.
 - ✓ This product is only available made to measure and adapted to your sailboat.

Information sail@nodusfactory.com

NODUS
FACTORY

MADE IN FRANCE

www.nodusfactory.com



Scan me !

Mooring-Dockline® - Polyester HT

« Core & Cover »

| ø mm | Breaking load kg |
|------|------------------|
| 8 | 1500 |
| 10 | 2200 |
| 12 | 3350 |
| 14 | 4010 |
| 16 | 4800 |
| 18 | 6450 |
| 20 | 7100 |
| 22 | 8500 |
| 24 | 10000 |
| 26 | 11700 |
| 28 | 13500 |



TECHNICAL SHEET

❑ CONSTRUCTION

8 to 14mm: 16 plaits / 16 to 30mm: 32 plaits.
Double braid.

❑ COMPOSITION

Core: Polyester HT
Cover: Polyester HT

❑ CHARACTERISTICS

UV protection, excellent elasticity and easy to splice and handle

USE

❑ WORKING STRETCH

➤ <25%

❑ FEATURES

➤ UV protection, excellent elasticity and easy to splice and to handle

❑ APPLICATIONS

➤ Excellent as a mooring and multipurpose.

Information sail@nodusfactory.com

NODUS
FACTORY

MADE IN FRANCE

www.nodusfactory.com



Scan me !

Application range - Connector on Dyneema® rope

| T-close | Strope | | | | | |
|----------|----------|-------------|-------------|-------------|-------------|-------------|
| Sail m2 | Rope | 6 mm | 8 mm | 10 mm | 12 mm | 14 mm |
| Upwind | | E T-close 3 | E T-close 5 | E T-close 6 | E T-close 8 | E T-close 8 |
| | ∅ Strope | 3 mm | 4 mm | 5 mm | 6 mm | 7 mm |
| Wind Bft | Wind kts | m2 | m2 | m2 | m2 | m2 |
| 8 Bft | 40 | 26 | 55 | 78 | 113 | 113 |
| Downwind | | E T-close 3 | E T-close 5 | E T-close 6 | E T-close 8 | E T-close 8 |
| | ∅ Strope | 3 mm | 4 mm | 5 mm | 6 mm | 7 mm |
| Wind Bft | Wind kts | m2 | m2 | m2 | m2 | m2 |
| 8 Bft | 40 | 41 | 86 | 122 | 175 | 175 |

| T-bone | Strope | | | | | |
|----------|----------|------|------|-------|-------|-------|
| Sail m2 | Rope | 6 mm | 8 mm | 10 mm | 12 mm | 14 mm |
| Upwind | | E M6 | E M8 | E M10 | E M12 | E M14 |
| | ∅ Strope | 3 mm | 4 mm | 5 mm | 6 mm | 7 mm |
| Wind Bft | Wind kts | m2 | m2 | m2 | m2 | m2 |
| 8 Bft | 40 | 43 | 59 | 89 | 125 | 188 |
| Downwind | | E M6 | E M8 | E M10 | E M12 | E M14 |
| | ∅ Strope | 3 mm | 4 mm | 5 mm | 6 mm | 7 mm |
| Wind Bft | Wind kts | m2 | m2 | m2 | m2 | m2 |
| 8 Bft | 40 | 66 | 92 | 139 | 195 | 293 |

| Spliced eye | Eye strope | | | | | |
|-------------|------------|---------|---------|---------|---------|---------|
| Sail m2 | Rope | 6 mm | 8 mm | 10 mm | 12 mm | 14 mm |
| Upwind | | E eye 3 | E eye 4 | E eye 5 | E eye 6 | E eye 7 |
| | ∅ Strope | 3 mm | 4 mm | 5 mm | 6 mm | 7 mm |
| Wind Bft | Wind kts | m2 | m2 | m2 | m2 | m2 |
| 8 Bft | 40 | 54 | 99 | 154 | 214 | 324 |
| Downwind | | E eye 3 | E eye 4 | E eye 5 | E eye 6 | E eye 7 |
| | ∅ Strope | 3 mm | 4 mm | 5 mm | 6 mm | 7 mm |
| Wind Bft | Wind kts | m2 | m2 | m2 | m2 | m2 |
| 8 Bft | 40 | 85 | 154 | 239 | 333 | 504 |

| T-sail | Strope | | | |
|----------|----------|------------|------------|------------|
| Sail m2 | Rope | 4 mm | 5 mm | 6 mm |
| Upwind | | E T-sail 5 | E T-sail 6 | E T-sail 7 |
| Wind Bft | Wind kts | m2 | m2 | m2 |
| 8 Bft | 40 | 27 | 47 | 74 |
| Downwind | | E T-sail 5 | E T-sail 6 | E T-sail 7 |
| Wind Bft | Wind kts | m2 | m2 | m2 |
| 8 Bft | 40 | 43 | 73 | 115 |

| T-drop | Strope | | | | |
|----------|----------|----------|----------|----------|----------|
| Sail m2 | Rope | 8 mm | 10 mm | 12 mm | 14 mm |
| Upwind | | E T-d 12 | E T-d 12 | E T-d 16 | E T-d 16 |
| Wind Bft | Wind kts | m2 | m2 | m2 | Wind Bft |
| 8 Bft | 40 | 21 | 33 | 30 | 30 |
| Downwind | | E T-d 12 | E T-d 12 | E T-d 16 | E T-d 16 |
| Wind Bft | Wind kts | m2 | m2 | m2 | Wind Bft |
| 8 Bft | 40 | 33 | 33 | 47 | 47 |

NØDUS

FACTORY

Parc d'Activités de Laroiseau • 5 rue Ella Maillart • F- 56000 Vannes
Tél : +33 (0)2 97 67 64 83 • Mail : Sail@nodusfactory.com
www.nodusfactory.com